

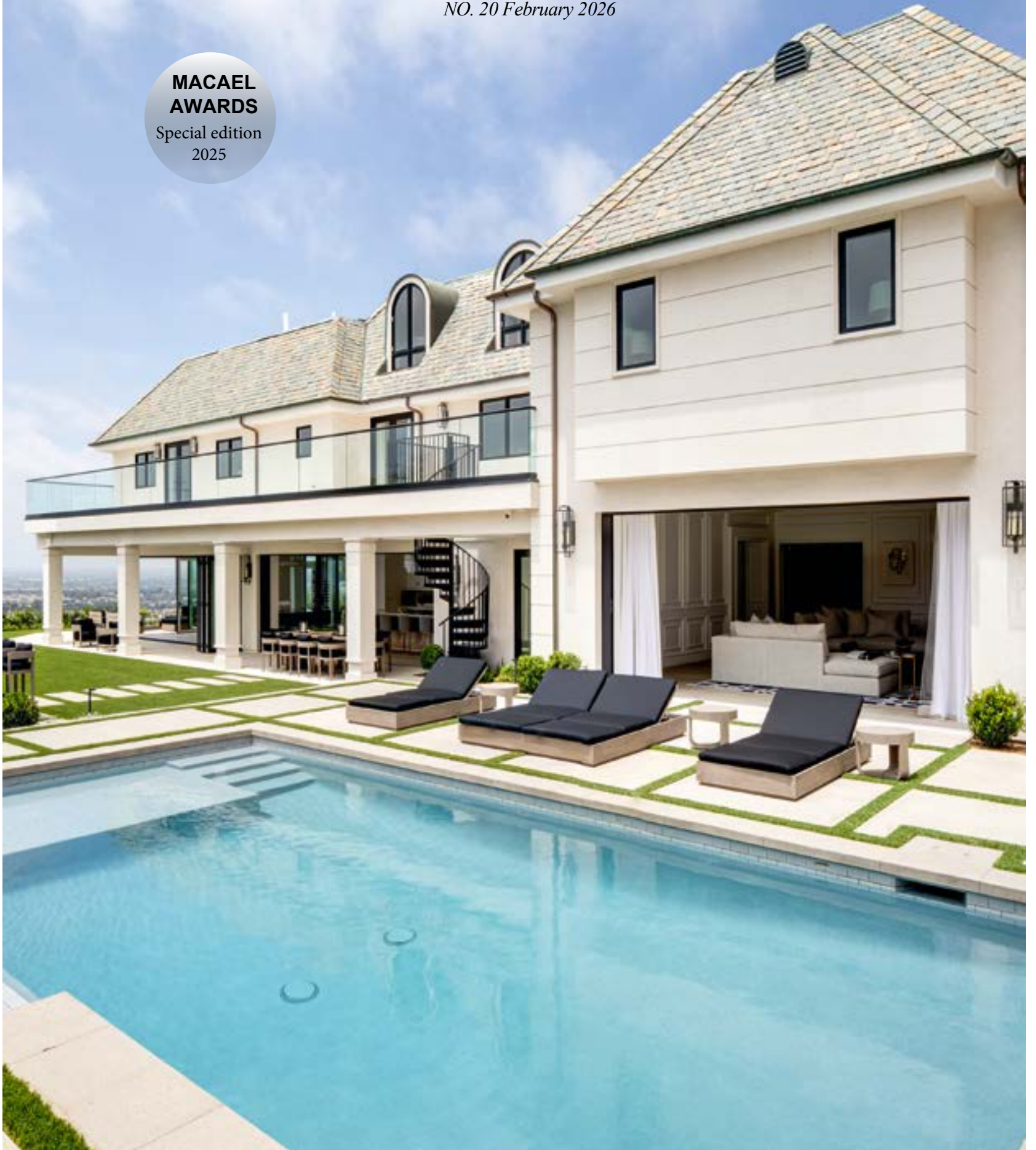
# MÁRMOL

Architecture & Design

*NO. 20 February 2026*

**MACAEL  
AWARDS**

Special edition  
2025



# XXXVIII Edición Premios Macael



COSENTINO



esmalglass-itaca  
grupo



omar  
COATINGS

COLOROBRIA



ALTA  
Performance Materials



BBVA



Tenax



bankinter.



//ABANCA



WWW.PREMIOSMACAE.COM

## EDITORIAL



We open these pages with a clear conviction: beyond being construction materials, natural stone and ultra-compact surfaces now function as a language through which architecture and design tell stories—stories of place, of time, of craftsmanship and of the future. Each edition of Mármol / Architecture and Design is conceived to bring together some of these narratives and share them with those who understand architectural practice as an exercise in responsibility, creativity and permanence.

Throughout this issue, we propose a journey through projects, institutions, professionals and media outlets that have me a significant contribution to positioning our sector at the highest standards of quality, innovation and sustainability. From public infrastructures that enhance everyday life to cultural projects that connect past and present; from residential and commercial architecture in international contexts to institutional and communication initiatives that strengthen the value chain and project knowledge toward new generations. The following pages speak of architecture built with discernment; of materials chosen with both technical

and aesthetic awareness; of solutions conceived to endure and to engage in dialogue with their surroundings. They also speak of the expertise of companies associated with the Marca Macael, capable of integrating tradition and technology, industry and craftsmanship, precision and sensitivity. A collective body of knowledge that takes shape in projects crossing borders and disciplines. At its core, this issue is an invitation to view stone and innovative surfaces such as Dekton and Silestone as active tools for designing the future. To those who design, research or build, we extend an invitation to become part of this shared universe—where architecture is grounded in materials that are honest, sustainable and rich in meaning.

Because we believe that the value of a sector is not measured solely by its figures, but by its capacity to inspire, to evolve and to leave a lasting mark. And because we are convinced that, together, we can continue to build an architecture that speaks of quality, identity and respect for its environment.

Welcome to these pages. Welcome to a space where natural stone and design continue to write their finest story.

Editor  
GLORIA CARRILLO SÁNCHEZ

# Summary

MÁRMOL / Architecture & Design

Edited by  
Asociación de Empresarios del Mármol de Andalucía  
AEMA

Design  
Gráficas Lucmar, S.C.A.

Printed by  
Gráficas Lucmar, S.C.A.

Legal deposit: AL 2751-2019  
Printed in Spain

This magazine is made with chlorine-free paperá  
elaborada con papel libre de cloro

Magazine No. 20  
February 2026



## 19

**/INSTITUTION AWARD**  
CONSEJERÍA DE INDUSTRIA,  
ENERGÍA Y MINAS JUNTA DE  
ANDALUCÍA



## 32

**/DESIGN AWARD**  
IBÁÑEZ-COSENTINO ART FOUNDATION BY  
JARDÍN BOTÁNICO & GLIPTOTECA,  
CIUDAD DE LA CULTURA  
OLULA DEL RÍO, ALMERÍA



## 42

**/EUROPE  
INTERNATIONAL  
AWARD**  
BALTIC INFINITY,  
MIĘDZYDROJE, POLAND



## 06

**/SUSTAINABILITY  
AWARD**  
AUTORIDAD PORTUARIA  
OF ALMERÍA



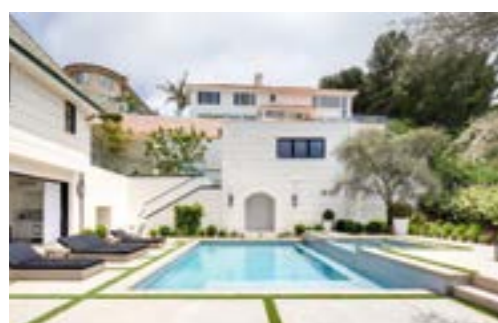
## 23

**/NATIONAL AWARD**  
BASÍLICA SAGRADA FAMILIA,  
BARCELONA



## 46

**/BLANCO MACAEL AWARD**  
FACULTY OF HEALTH SCIENCES I+D+I  
+TIC BUILDING UNIVERSIDAD DE JAÉN



## 13

**/NORTH AMERICA  
INTERNATIONAL AWARD**  
FRENCH TERRAKOTTA CORP. DBA  
IMPRESSION, BY VILLA NAPOLI, CALIFORNIA



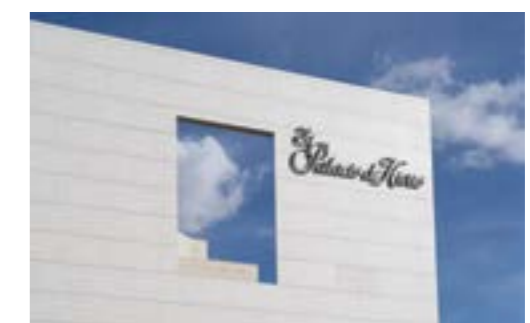
## 27

**/ASIA INTERNATIONAL  
AWARD**  
NAGOYA METRO STATION, JAPAN



## 39

**/COMMUNICATION  
AWARD**  
FOCUS PIEDRA



## 52

**/LATIN AMERICA  
INTERNATIONAL AWARD**  
PALACIO DE HIERRO  
LEÓN, MEXICO

# SUSTAINABILITY AWARD

## AUTORIDAD PORTUARIA OF ALMERÍA



Sustainability—understood as a genuine balance between economic progress, social well-being and environmental responsibility—lies at the heart of the intervention carried out by the Autoridad Portuaria de Almería (Almería Port Authority) at its administrative headquarters. This project, recognised with the Sustainability Award, exemplifies how architecture and urban design can become strategic tools for transforming the relationship between port infrastructures and the city.

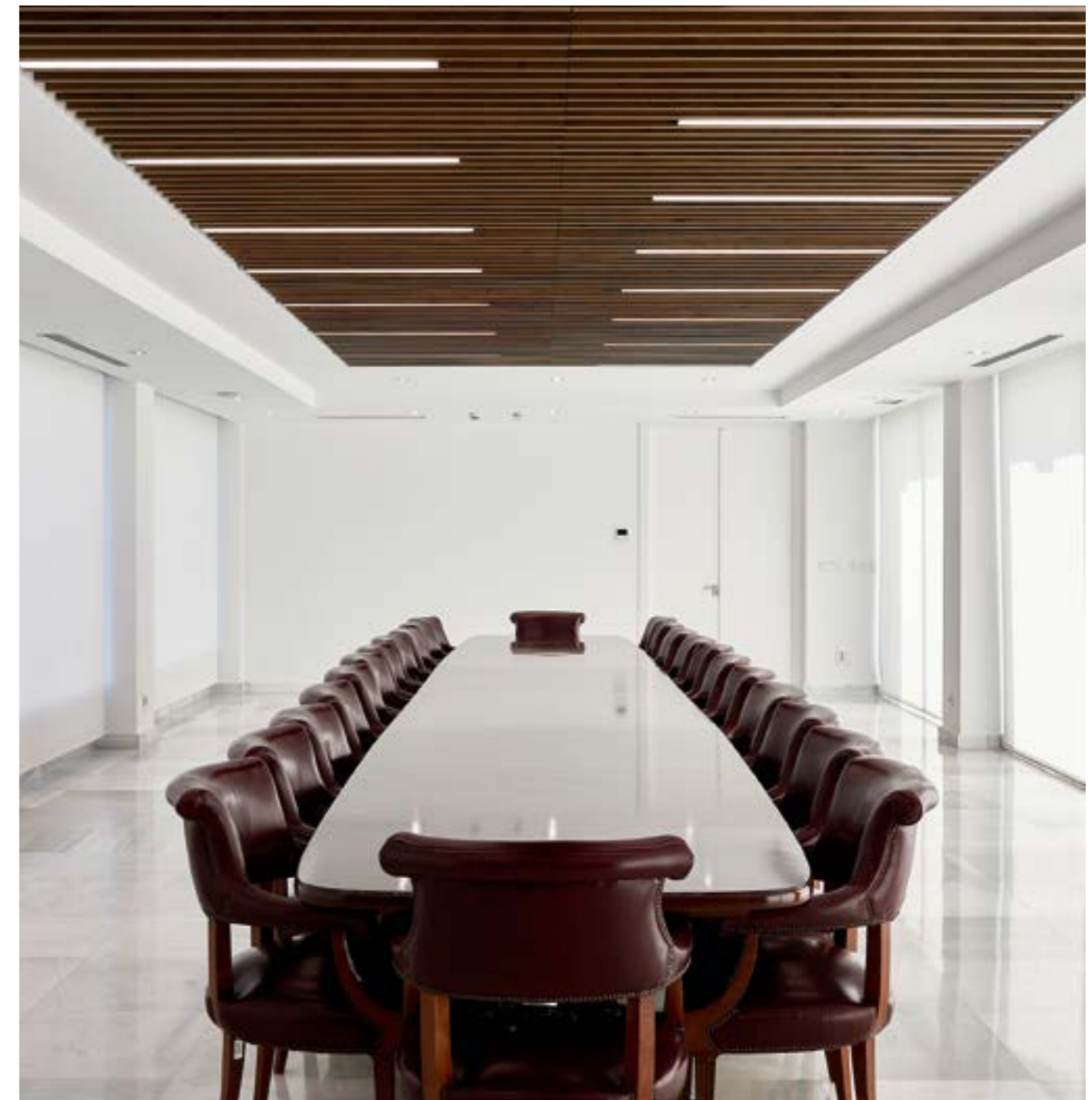


The intervention addressed a comprehensive improvement in the building's energy efficiency through the incorporation of a new architectural envelope, the redevelopment of the surrounding public realm and the optimisation of access points. Beyond updating the building from a functional and aesthetic standpoint, these measures reposition it as an open, permeable space connected to the urban fabric.

The project forms part of the broader port-city integration strategy and approaches sustainability through a balanced consideration of its three core dimensions. From a social perspective, the intervention has generated accessible, multifunctional, high-quality public spaces designed for the enjoyment of residents and visitors alike, capable of accommodating diverse uses and urban dynamics. This opening of the port to the city contributes to enhancing quality of life and strengthening the bond between the two spheres.

Economically, the project has had a positive impact both during its execution—through job creation—and in the medium and long term, by contributing to the tourism-driven revitalisation of Almería. The enhancement of the port frontage's urban image and the modernisation of its facilities increase the enclave's appeal as a landmark space for institutional, cultural and tourism-related activity.

The environmental dimension constitutes one of the project's fundamental pillars. The refurbishment of the administrative building has significantly reduced its carbon footprint, thanks to a design focused on energy efficiency and the responsible use of resources. Material selection plays a key role in this approach, combining locally sourced natural materials with innovative surfaces that provide durability, low maintenance and high technical performance.

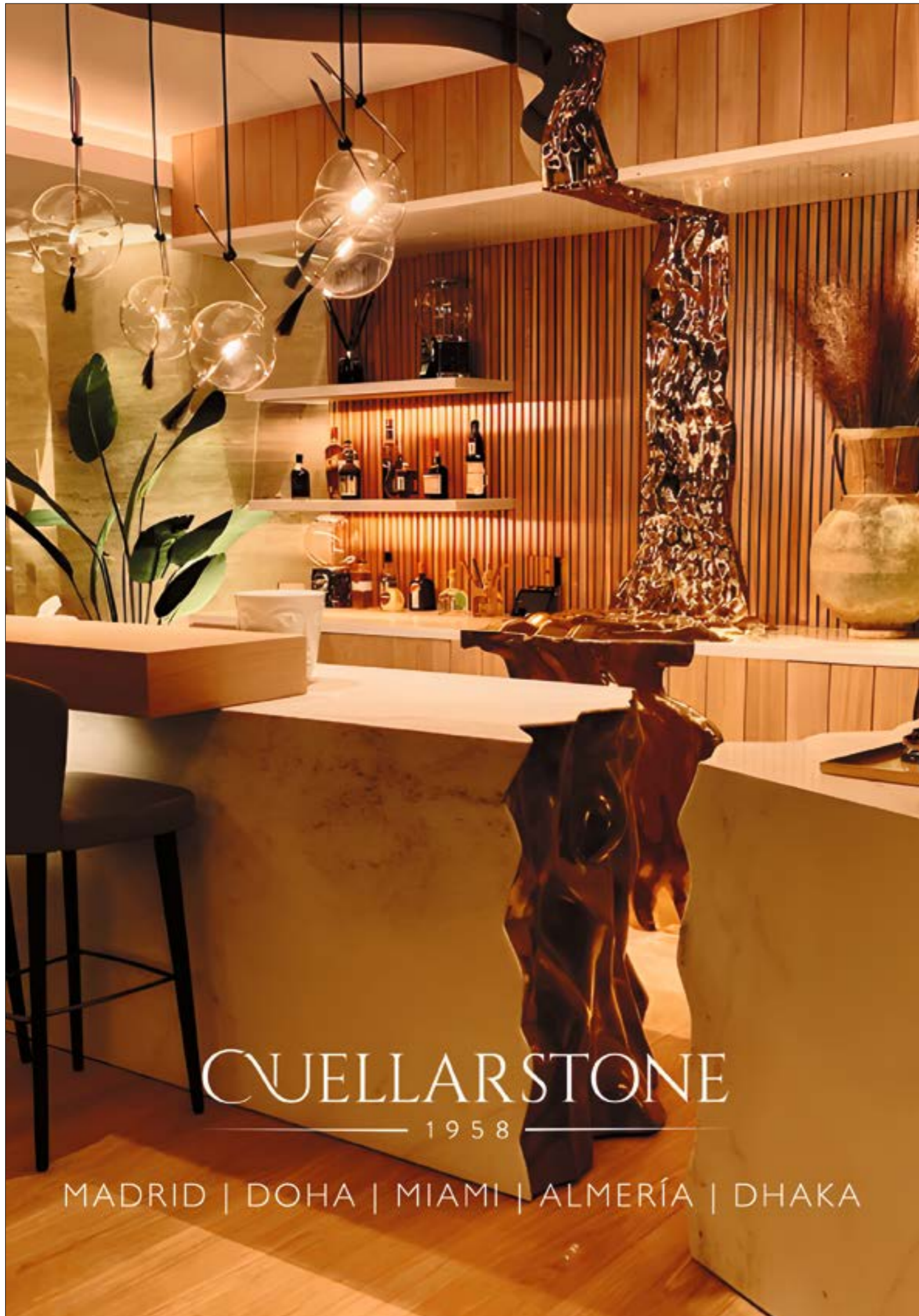




Among the materials used are Dekton, Blanco Macael marble, Almería travertine, and granite—a selection that reinforces the project's local identity and underscores the value of natural stone as an ally of sustainable architecture. These materials not only provide aesthetic quality and durability, but also help reduce the environmental impact associated with transportation and the building's life cycle.

# NORTH AMERICA INTERNATIONAL AWARD

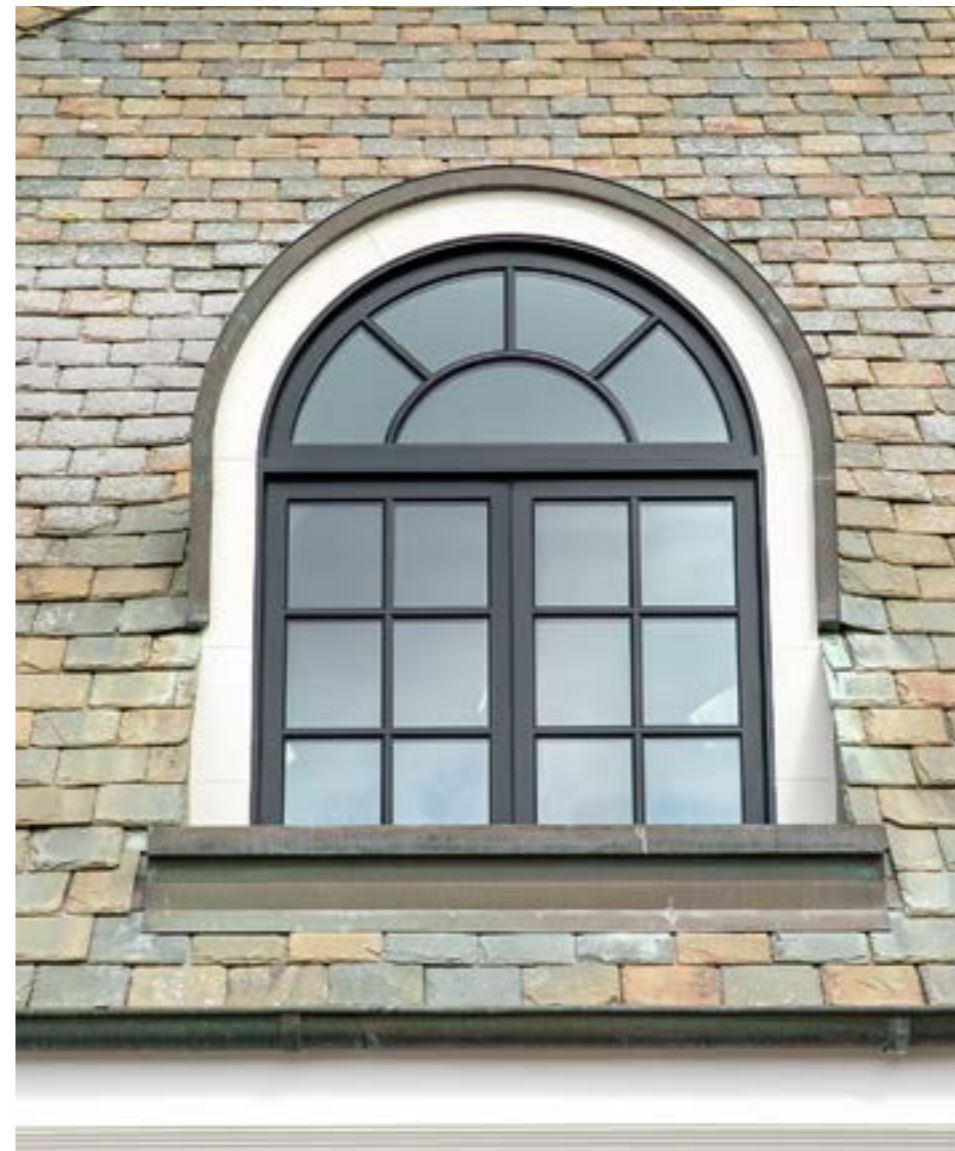
FRENCH TERRAKOTTA CORP. DBA  
IMPRESSION, BY VILLA NAPOLI,  
CALIFORNIA



CUELLARSTONE  
— 1958 —

MADRID | DOHA | MIAMI | ALMERÍA | DHAKA





High-end residential architecture finds in natural stone an essential ally for expressing identity, permanence and sophistication. In this context, Villa Napoli, located in Newport Beach (California), has been honoured with the North America International Award, in recognition of a project that combines Mediterranean tradition, material excellence and meticulous execution in one of the most exclusive residential enclaves on the U.S. West Coast.

The complex, developed by French Terrakotta Corp. DBA Impression, comprises two buildings with a total constructed area of approximately 1,200 m<sup>2</sup>, distributed over two levels and conceived as a cohesive ensemble in which architecture, landscape and materiality engage in harmonious dialogue. The main residence draws on Italian–Mediterranean inspiration, reinterpreted through a contemporary lens and adapted to the Californian lifestyle.

White limestone emerges as the defining material of the main façade, used in both structural and decorative elements—including columns—as well as in cladding of varying thicknesses, surrounds, sills, cornices, frames and flooring. The same natural stone extends into the outdoor areas, where it is applied to terraces, pool edges and the outdoor kitchen, ensuring seamless visual continuity between interior and exterior. The total supply volume, close to 80 m<sup>3</sup>, underscores the central role of natural stone as the project’s structural backbone and as a key component in achieving a durable, high-quality architectural result.



Inside, natural stone flooring lends solidity and elegance to the spaces, while fireplaces in Negro Marquina marble and Blanco Carrara marble introduce chromatic contrast and classical nuances that enrich the domestic atmosphere. The main kitchen, crafted in Blanco Carrara marble, reinforces the concept of a refined interior where functionality and aesthetics integrate effortlessly. As a distinctive feature of the ensemble, the summer kitchen stands out, equipped with an expansive Taj Mahal quartzite countertop.

With the granting of the North America International Award, this project is recognised as a compelling demonstration of how natural stone continues to serve as a benchmark material in luxury residential architecture—capable of delivering identity, continuity and construction excellence.

# 45TINO

STONE & SURFACES

Durante **45 años**, TINO ha desarrollado soluciones integrales en **piedra natural y otras superficies arquitectónicas premium** para proyectos de arquitectura e interiorismo de alto nivel.

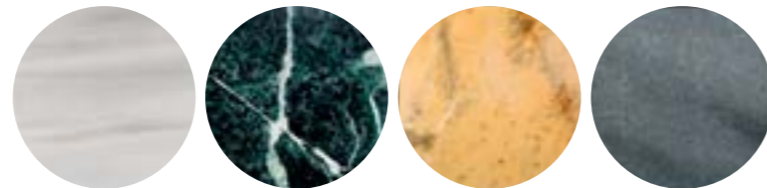
Nuestra experiencia, unida a la **Ingeniería y la innovación tecnológica**, nos permite aportar valor real a proyectos de alta exigencia, desde la definición técnica hasta su ejecución en obra.

Este enfoque se completa con **BEONIT**, nuestra marca de mobiliario en piedra natural, que traslada el conocimiento técnico, los acabados y la precisión constructiva de TINO al diseño de piezas para interiorismo.

Soluciones como **Stonesize**, junto a una amplia gama de **acabados y texturas** y un soporte técnico especializado, consolidan a TINO como un socio de referencia en proyectos donde las superficies son clave en el diseño arquitectónico.



[www.tinostone.com](http://www.tinostone.com)  
[info@tinostone.com](mailto:info@tinostone.com)



Distribuidores de exclusividad. Contigo forjamos la excelencia en cada proyecto. Descubre nuestros tesoros: Verde Macael, Amarillo Macael, Blanco Macael Río y Gris Macael.



T. 950 44 53 05  
[info@marmolesnaturalesmacael.es](mailto:info@marmolesnaturalesmacael.es)  
Paraje Jotatell, 0 S N,  
04867 Macael, Almería  
[@marmolesnaturalesmacael](https://www.instagram.com/marmolesnaturalesmacael)

## INSTITUTION AWARD CONSEJERÍA DE INDUSTRIA, ENERGÍA Y MINAS JUNTA DE ANDALUCÍA





Institutional support is essential to ensure the evolution, modernisation and sustainability of strategic productive sectors. In this context, the Institution Award recognises the work carried out by the Consejería de Industria, Energía y Minas Junta de Andalucía for its commitment to strengthening and transforming the natural stone and marble industry—one of Andalusia’s most deeply rooted industrial pillars, with strong territorial ties and significant international reach.

The award highlights the implementation of the Crece Industria Value Chain Plan for the Andalusian Stone and Marble Sector, endowed with €18.8 million in incentives aimed at enhancing business competitiveness and promoting a more efficient, innovative and sustainable industrial model. This initiative is structured around the flagship project, Productive Modernisation and Sustainability of the Almería Stone and Marble Industry, conceived as a driving force for transformation across the entire sector.

Through this plan, the regional ministry promotes investments focused on improving production processes, incorporating advanced technologies, optimising energy efficiency and reducing environmental impact—thereby contributing to the consolidation of a more resilient business fabric, better prepared to face the challenges of an increasingly demanding global market.

The Institution Award also recognises the launch of the Natural Stone and Innovative Surfaces Industry Promotion Programme, an initiative with a strong educational and outreach focus aimed at architecture students. The programme seeks to bring knowledge of the sector closer to new generations of professionals, fostering appreciation of natural stone and innovative surfaces as contemporary, versatile materials aligned with the principles of sustainable architecture.

Fully funded by the Consejería de Industria, Energía y Minas de la Junta de Andalucía, the programme involves postgraduate and master’s students from the public universities of Universidad de Sevilla, Universidad de Granada and Universidad de Málaga. This collaboration strengthens knowledge transfer and helps shape a shared vision for the future of the sector.

With this recognition, the Institution Award underscores a firm commitment to a sector with a distinct identity—capable of evolving without renouncing its tradition and of projecting itself confidently into the future.



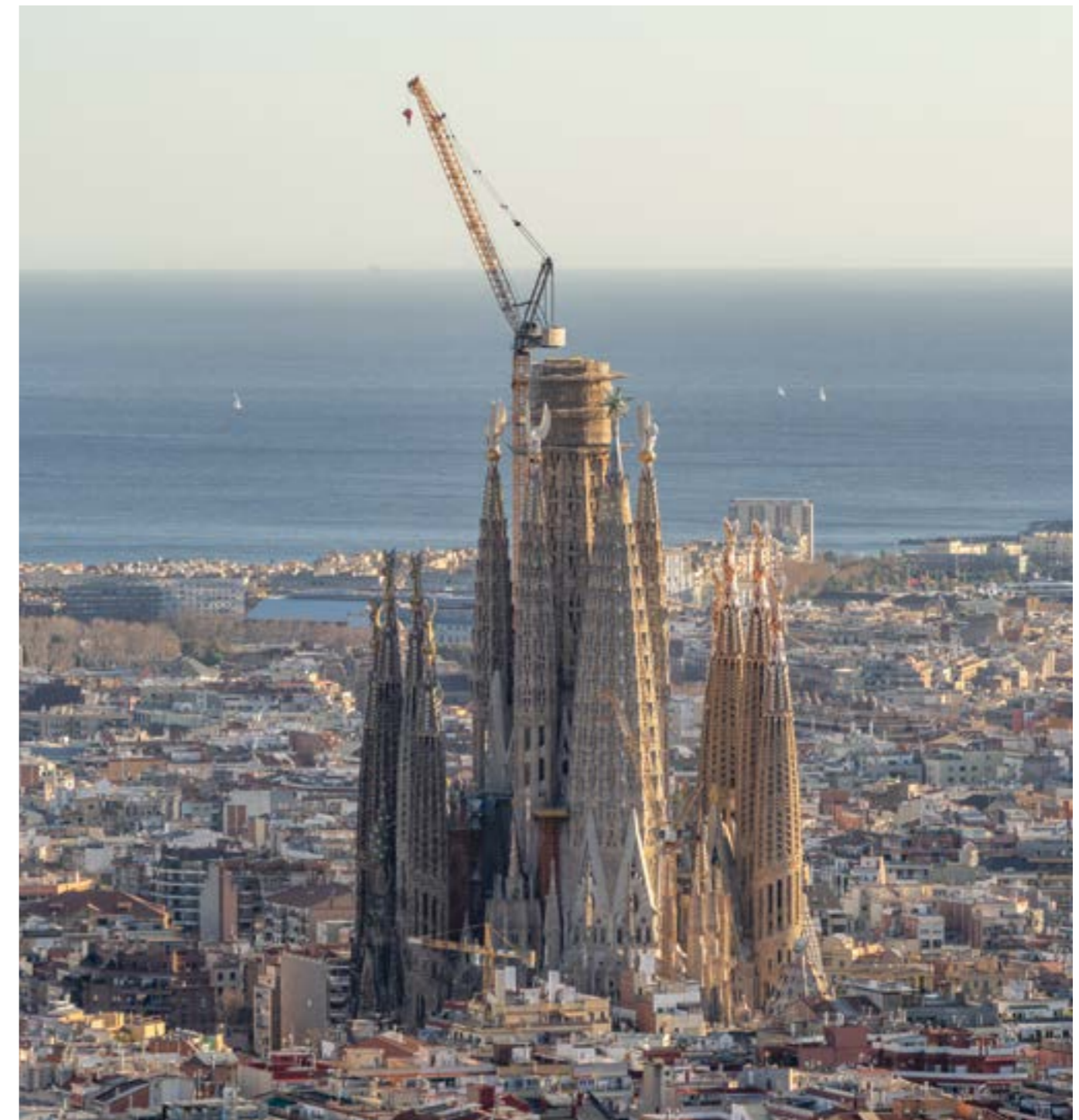
**SOSTENIBILIDAD  
CALIDAD  
PIEDRA NATURAL**

Descubre más en: [www.triturados.es](http://www.triturados.es)  
Síguenos en:    



# NATIONAL AWARD

## BASÍLICA SAGRADA FAMILIA, BARCELONA





The Basílica Sagrada Família is not only one of the great icons of world architecture, but also a living project in which tradition, innovation and technical excellence converge to carry forward the legacy of Antoni Gaudí. In this context, the work undertaken in the manufacture and supply of natural stone elements for the basilica's towers has been honoured with the National Award, in recognition of a construction challenge of extraordinary complexity and symbolic value.

The project has encompassed the execution of the natural stone pieces for the Towers of the Evangelists—Saint Matthew, Saint Mark, Saint Luke and Saint John—as well as the Tower of the Virgin Mary and the Tower of Jesus Christ. These vertical elements represent one of the most ambitious and recognisable expressions of the architectural ensemble. Each tower has required extreme precision, both in its geometric design and its material realisation, in order to faithfully respond to Gaudí's original vision and to the strict technical specifications established by the site management.

The execution of these elements has represented a genuine technical and artistic challenge, resolved through the seamless integration of traditional stonemasonry— heir to centuries of constructive knowledge—and high-precision industrial fabrication, supported by advanced technology and rigorous quality control processes. This dialogue between tradition and innovation has made it possible to address complex geometries, great heights and exceptional structural demands, while consistently maintaining the aesthetic quality and durability inherent to a work conceived to endure over time.

The completion of the towers takes on particular significance as it coincides with preparations for the centenary of Gaudí's death in 2026—an anniversary that will further strengthen the international projection of the basilica and its role as a cultural, spiritual and architectural landmark on a global scale. In this context, participation in this key phase of the project consolidates the link between the Macael brand and one of the most universal works in the history of architecture, associating its natural stone with values of excellence, innovation and legacy.

This National Award recognises not only the technical complexity of the work carried out, but also the capacity of the natural stone industry to contribute to a project that transcends generations and borders. The Sagrada Família continues to rise towards the skyline of Barcelona, supported by materials, knowledge and craftsmanship that transform each piece into part of a shared heritage of incalculable value.



# ASIA INTERNATIONAL AWARD

NAGOYA METRO STATION, JAPAN



**OLUcarpa**<sup>®</sup>  
eventos

infraestructura para el espectáculo

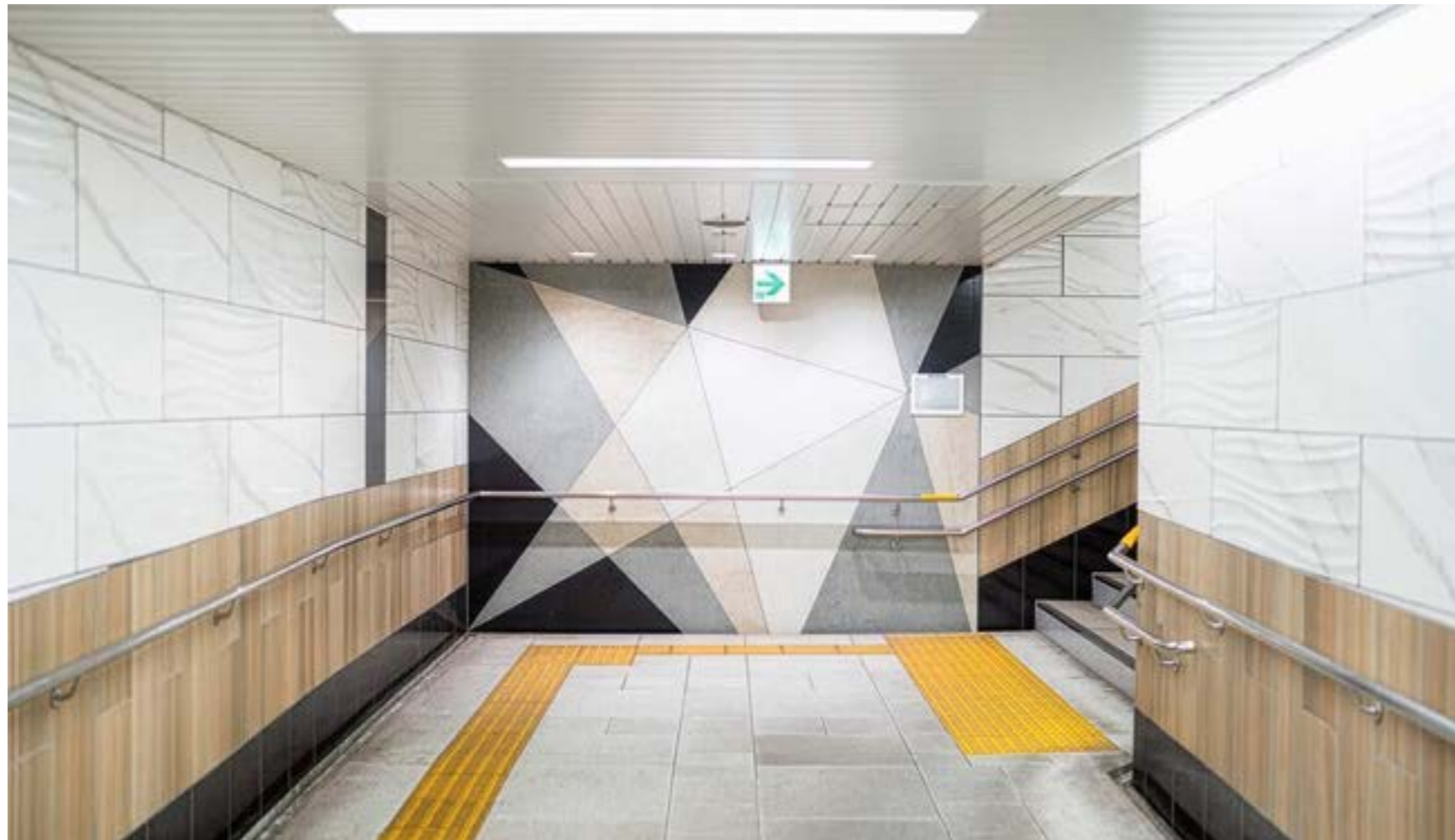
somos únicos  
en ser los mejores



SIGUENOS



Teléfono 950 441 818 | Móviles 670 871 390 / 610 728 889  
info@olucarpa.com - www.olucarpa.com | OLULA DEL RÍO (Almería)



Public infrastructure architecture plays a fundamental role in shaping the quality of everyday urban experience. In this context, the Nagoya Metro Station has been honoured with the International Asia Award for its ability to transform a high-traffic underground space into a functional, luminous and carefully designed environment, where architectural concept and material selection are decisive.

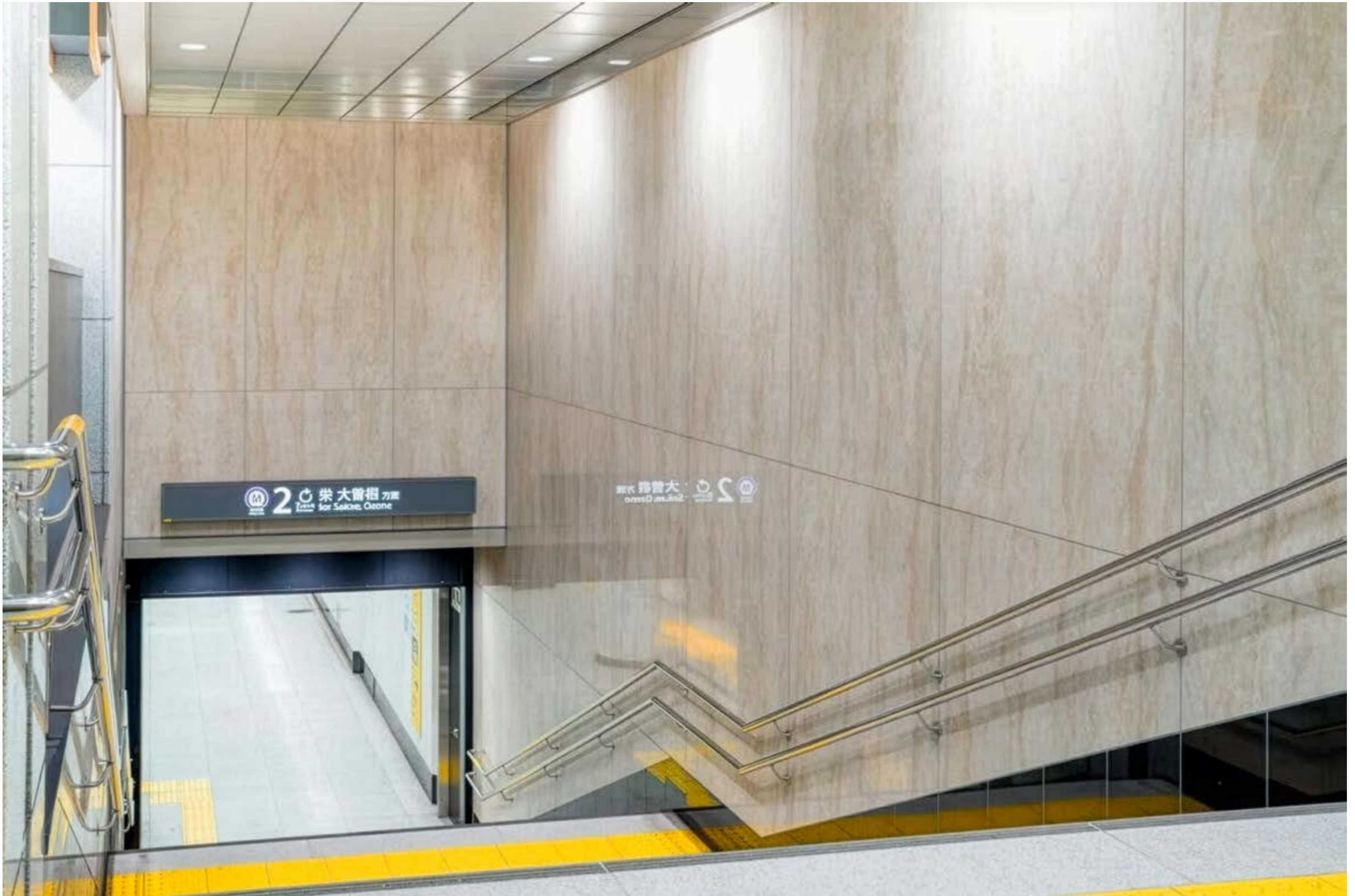
Designed by Ichikawa Michio Architects, the project covers approximately 1,800 m<sup>2</sup> of wall and floor surfaces. It proposes a precise and coherent intervention aimed at enhancing spatial perception and ensuring the durability of finishes in an intensively used setting. The choice of materials responds to demanding technical criteria while maintaining a strong contemporary visual identity.

In this regard, Dekton plays a central role in the project. The station incorporates a range of colours—Helena, Keranium, Taga, Arga, Spectra, Lunar, Halo and Kreta—selected for their performance, versatility and aesthetic value. This variety helps structure the spaces, create visual rhythm and introduce subtle nuances that enrich the daily user experience.

The most distinctive feature of the intervention is the use of polished Dekton Helena surfaces. Their reflective finish amplifies available light, transforming the underground environment into a brighter and more welcoming space. This solution reduces the need for additional lighting fixtures, optimising energy consumption while improving visual comfort.

From a technical standpoint, Dekton was chosen for its high durability, ease of maintenance and resistance to cracks and stains. These properties ensure the long-term preservation of aesthetic quality while minimising maintenance costs.

The subtle marble-like aesthetics of certain surfaces add a sensory dimension that transcends mere functionality, elevating the overall atmosphere and demonstrating how innovative materials can humanise infrastructural spaces. This balance between technical performance and architectural expression establishes Nagoya Metro Station as a benchmark in design applied to urban mobility, worthy of the International Asia Award.



# DESIGN AWARD

IBÁÑEZ-COSENTINO ART  
FOUNDATION, BY  
JARDÍN BOTÁNICO & GLIPTOTECA,  
CIUDAD DE LA CULTURA  
OLULA DEL RÍO, ALMERÍA



Design, understood as a tool for dialogue between past and present, takes on a unique dimension in the Jardín Botánico and Gliptoteca of the Ciudad de la Cultura in Olula del Río. Recognised with the Design Award, this space stands as an exceptional example of how natural stone, technology and artistic knowledge can converge to create a cultural environment of high symbolic and contemporary value.

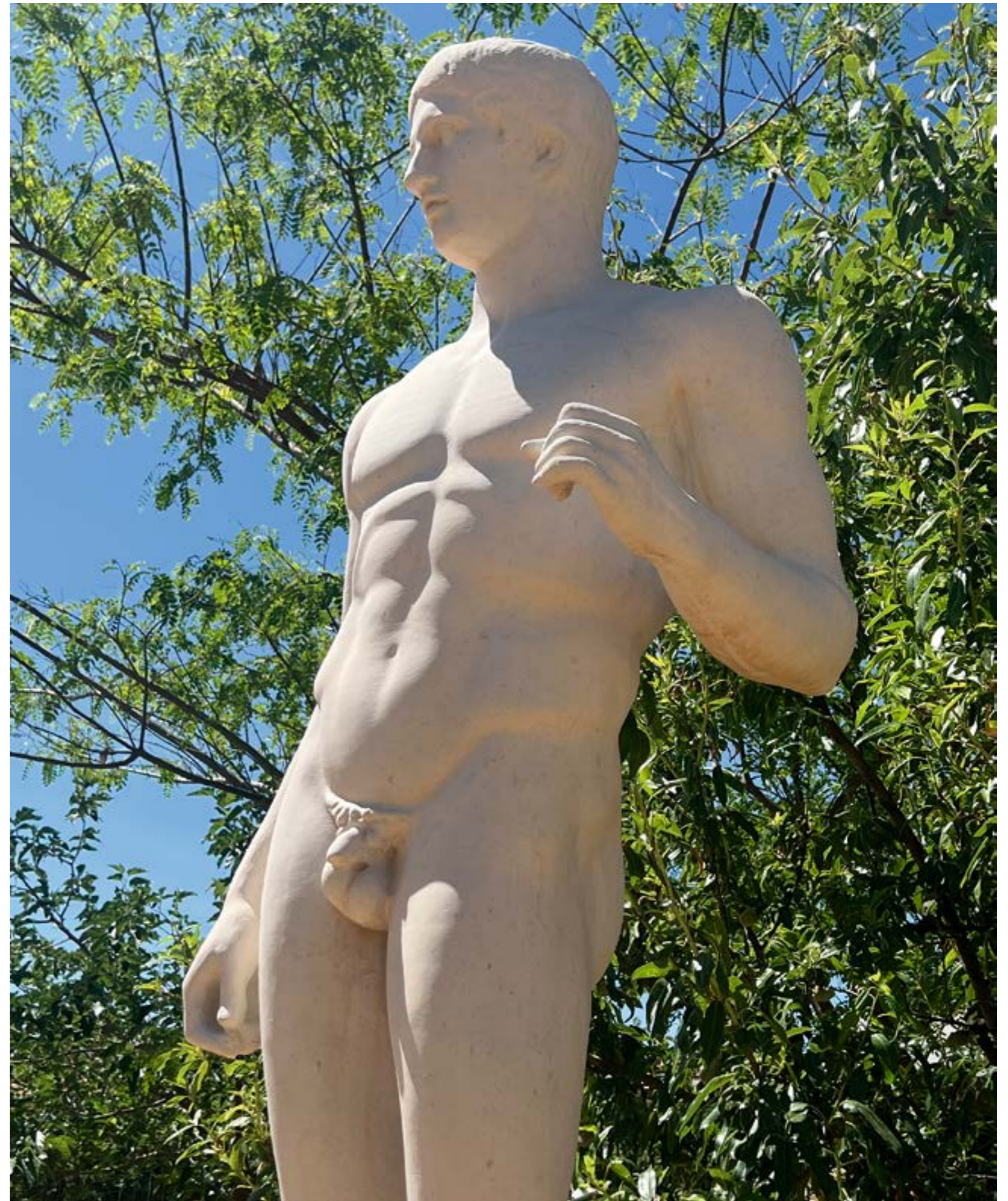
The gliptoteca houses a collection of 20 Greco-Roman sculptures reproduced in limestone, including universal icons of art history such as the Venus de Milo, the Doryphoros and the Spinario.

The singularity of the project lies in the creation process: the sculptures are produced using advanced sculptural reproduction technologies capable of achieving exceptional fidelity to the originals. From the extraction of stone blocks to their final machining, each phase is executed with technical precision,

combining industrial innovation with respect for the material. Final finishes and detailing, carried out by the museum itself, reinforce the artisanal character and artistic rigour of the ensemble.

This balance between technology and craftsmanship transforms the gliptoteca into a space where natural stone regains its evocative power, moving beyond a purely exhibition function to become a sensory and educational experience. The project thus acts as a bridge between classical antiquity and the present, demonstrating how design can effectively connect new generations with universal artistic heritage.

With the granting of the Design Award, this work is recognised as a cultural reference that transcends local scale, highlighting the potential of natural stone and applied technologies in the creation of spaces that preserve, reinterpret and project heritage into the future.

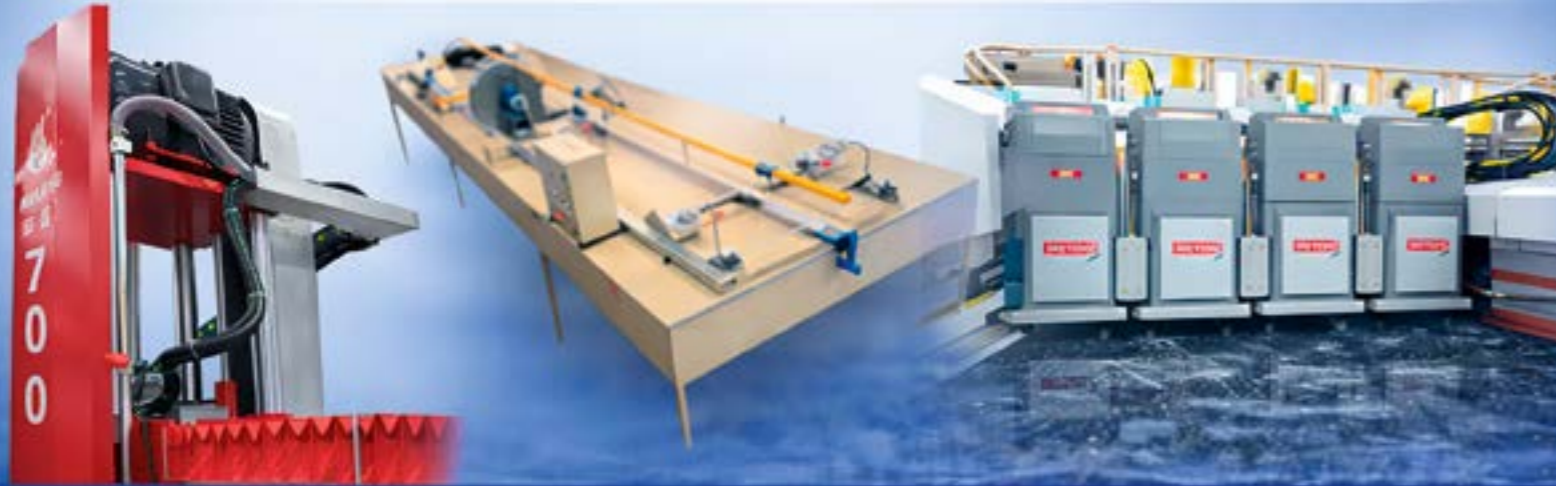






ENTIDAD COLABORADORA DE AEMA

## GESTIÓN DE AYUDAS Y SUBVENCIONES



INFO@ACTIVANEXT.EU +34 661 53 726



BLANCO MACAEL GRIS MACAEL GRIS ALBORÁN



www.juantijeras.com

Síguenos en:



Pol. Ind. Rubira Sola, Parcela C-1  
04867 MACAEL (Almería-España)  
Telf.: 950 445 440 / 669 362 141  
info@juantijeras.es



## COMMUNICATION AWARD FOCUS PIEDRA





## FOCUSPIEDRA.COM

Specialised communication has become a strategic tool for the evolution and visibility of industrial sectors. In this context, the Communication Award recognises the trajectory and impact of Focus Piedra, a media outlet that, under the leadership of its founder and CEO Marisa Carrio, has achieved steady growth while adapting to the transformation of the natural stone and large-format surfaces industry.

Since its inception, Focus Piedra has accompanied the sector throughout its modernisation process, analysing trends, showcasing projects and providing context for the technological, productive and commercial shifts that have shaped the industry's evolution. This capacity for adaptation has enabled it to consolidate its position as a leading information platform and prescriptive voice within Spain's natural stone sector, earning recognition and respect from professionals, companies and institutions alike.

Over the years, the publication has progressively broadened its editorial scope. Initially focused on traditional sector topics—such as quarries, processing techniques, stone workshops and machinery—Focus Piedra has evolved into a transversal platform capable of generating informed opinion and acting as a prescriber in strategic fields including Kitchen & Bath, construction and building, architecture and interior design. This wider perspective has helped position natural stone and innovative surfaces at the centre of discussions on design, sustainability and construction quality.

The distinctive value of Focus Piedra lies in its ability to interpret the sector, connect the various stakeholders across the value chain and anticipate trends, playing an active role as the industry's voice and as a meeting point for the professional channel. Its rigorous, specialised and B2B-oriented approach has made it an essential reference for decision-making and opportunity generation.

This Communication Award therefore recognises a success story in sector-specific journalism—prescriptive in nature and an authoritative voice for an entire industry.

EUROPE  
INTERNATIONAL AWARD  
BALTIC INFINITY, MIĘDZYDROJE,  
POLAND





Residential and hotel architecture in coastal environments entails specific demands in terms of durability, maintenance and integration with the surrounding landscape. The Baltic Infinity complex, located in Międzyzdroje, has been honoured with the International Europe Award for its ability to combine contemporary design, high technical performance and a carefully considered response to its maritime context.

Situated on the beachfront, the five-storey building comprises 161 apartments, combining residential and tourist uses. The ground floor is conceived as an open and dynamic space, incorporating retail units, a restaurant, spa and wellness areas. One of the project's most distinctive features is its ventilated façade, executed entirely in Dekton, a material selected for its exceptional technical performance under extreme environmental conditions.

The choice is justified by its near-zero porosity, high resistance to humidity, salinity and atmospheric agents, as well as its ease of cleaning and maintenance. The façade, covering a total surface area of 4,200 m<sup>2</sup>, is composed of 11,000 prefabricated elements, enabling a high degree of execution control and significant

optimisation of construction timelines. The building process was completed in approximately one and a half years, demonstrating the efficiency of the system and the suitability of the material for large-scale projects.

From an aesthetic standpoint, the envelope design seeks harmony with the Baltic landscape, characterised by shifting light, sea and sand. Three Dekton shades—Danae, Moone and Domoos—in beige, white and black finishes were used to introduce depth, contrast and a contemporary reading of the ensemble, without competing with the natural surroundings.

The result is a sober and elegant architecture in which the façade fulfils not only a technical function but also becomes an expressive and defining element of the project. Baltic Infinity demonstrates how innovative surfaces can elevate the architectural quality of residential and hospitality developments while ensuring durability, efficiency and contextual coherence.

The International Europe Award recognises a project that combines material innovation, construction precision and sensitivity to place, establishing itself as a benchmark of contemporary architecture in coastal environments across Europe.

# BLANCO MACAEL AWARD

FACULTY OF HEALTH  
SCIENCES I+D+I+TIC  
BUILDING  
UNIVERSIDAD DE JAÉN



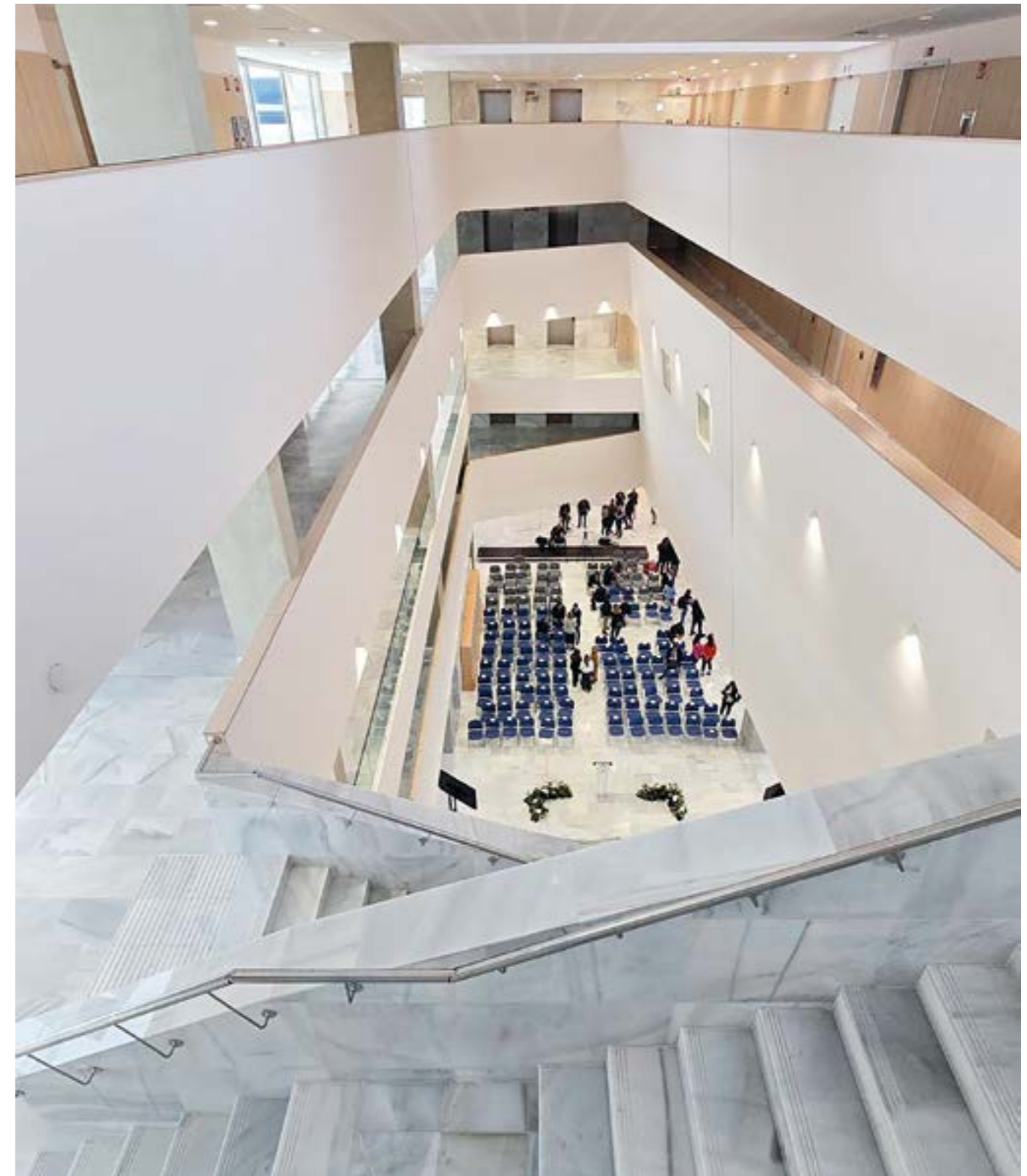
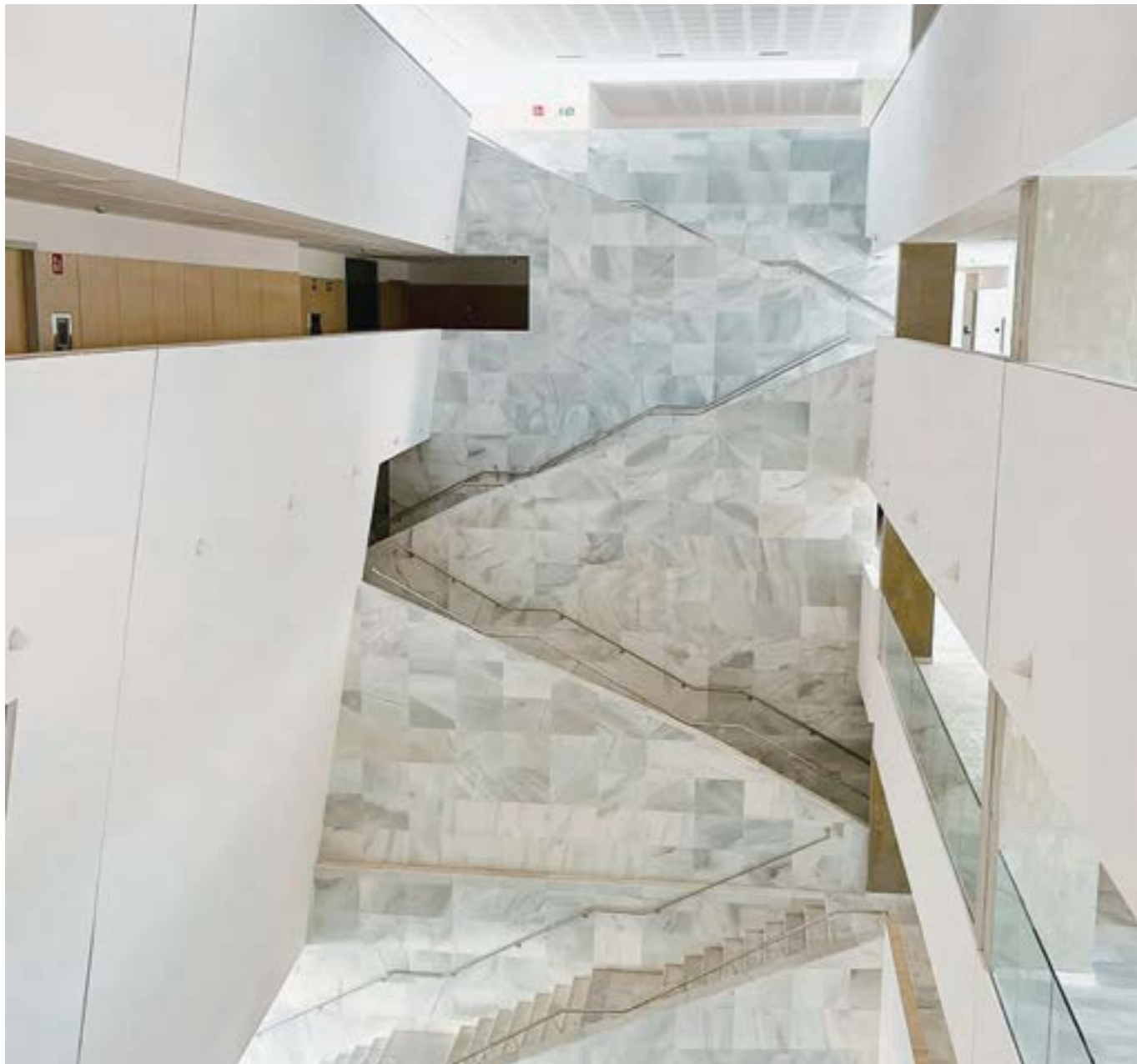


The Faculty of Health Sciences I+D+i+TIC building of Universidad de Jaén stands as an outstanding example of how Blanco Macael marble can be integrated into contemporary architecture as a structural, identity-defining and sustainable material. For this reason, the project has been honoured with the Award for Architecture in Blanco Macael Marble, recognising its thoughtful architectural conception and the leading role granted to natural stone.

Designed by Arquitrabe Arquitectos y Urbanistas and executed by the UTE UJA I+D+i+TIC consortium—comprising Construcciones Calderón S.A., Solar Jienense S.A. and Pinus S.A.—the building is conceived as an innovative, functional and open university facility where architecture, research and technology coexist in balance, guided by criteria of efficiency and spatial quality.

In this project, Blanco Macael marble takes centre stage, with more than 7,000 m<sup>2</sup> applied in various formats, becoming a key element both aesthetically and technically. The building is structured around major longitudinal axes that connect its different uses and functional areas, promoting spatial clarity and fluid circulation. This organisational scheme prioritises the entry of natural light and enhances passive energy efficiency, reducing reliance on artificial resources and improving interior comfort.





One of the project's most distinctive features is located on the south façade, where ponds clad in Blanco Macael marble act as reflective surfaces that amplify luminosity while also serving as natural cooling elements, contributing to the building's thermal regulation. This solution reinforces the bioclimatic character of the intervention and demonstrates the versatility of marble as an active material within sustainable strategies.

The large central void forms the heart of the building, organising the interior spaces and enhancing the perception of light and visual continuity. Staircases and flooring clad in Blanco Macael accompany this space,

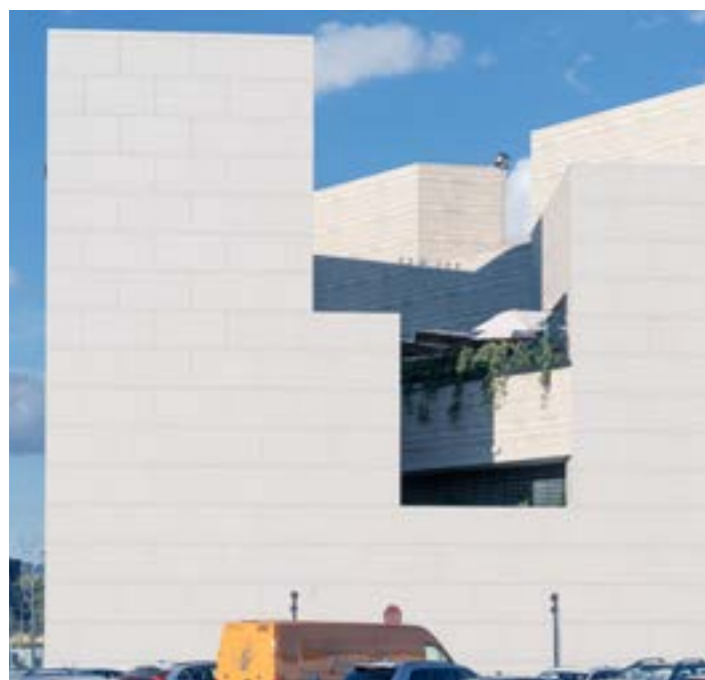
while exterior paving is resolved in granite tiles, ensuring resistance and durability in high-traffic and exposed areas.

This award recognises an architecture that integrates functionality, sustainability and material expression, positioning natural stone at the core of a building dedicated to research, innovation and knowledge. The project confirms that Blanco Macael marble remains a contemporary material, capable of responding to the technical and environmental demands of present and future architecture.

**LATIN AMERICA  
INTERNATIONAL  
AWARD**

**PALACIO DE HIERRO  
LEÓN, MEXICO**

*El  
Palacio de Hierro*



The Palacio de Hierro León project, located in León, Mexico, has been honoured with the International Latin America Award for its careful integration of architectural design, materiality and construction functionality.

Designed by Sordo Madaleno under the direction of Andrés Cajiga, with engineering and interior layout developed by Katorce Espacios, the building is conceived as a two-storey commercial plaza characterised by a contemporary interpretation of retail space, in which the architectural envelope plays a leading role as an element of identity and urban reference.

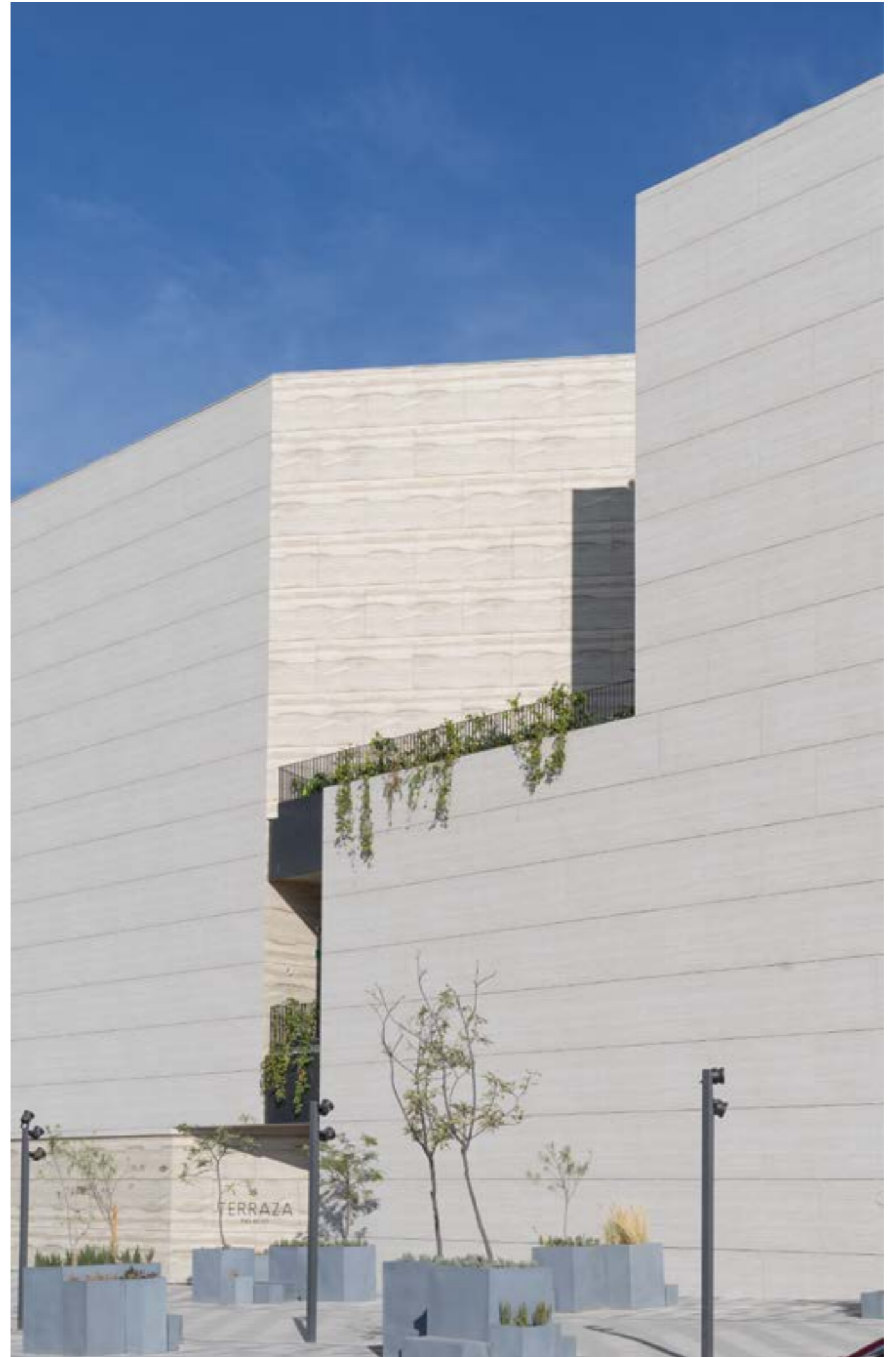
One of the project's most distinctive aspects is the combination of materials and colours on the façade, achieving a precise balance between modernity and natural character. The exterior envelope is resolved through large-format panels in Dekton Marmorio, selected for their strength, stability and aesthetic expressiveness.

Their texture and tone provide depth and a sober image capable of engaging with the urban context while maintaining presence and singularity.

This material strategy continues inside the building through the use of Dekton ID, applied to define geometric forms that establish visual and conceptual continuity with the exterior. The proposal also stands out for its low maintenance requirements and the durability of the materials employed—essential qualities in a high-traffic commercial building.

The choice of innovative surfaces ensures optimal performance under intensive use, while preserving natural beauty and a refined image over time.

With this recognition, the International Latin America Award highlights a project that exemplifies the capacity of commercial architecture to integrate design, technology and functionality, projecting a contemporary and solid architectural identity.





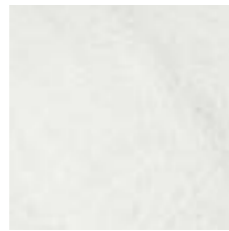
Abujardado  
Bush-Hammered



Apomazado  
Honed



Arenado  
Sanded



Envejecido  
Antique



Pulido  
Polished

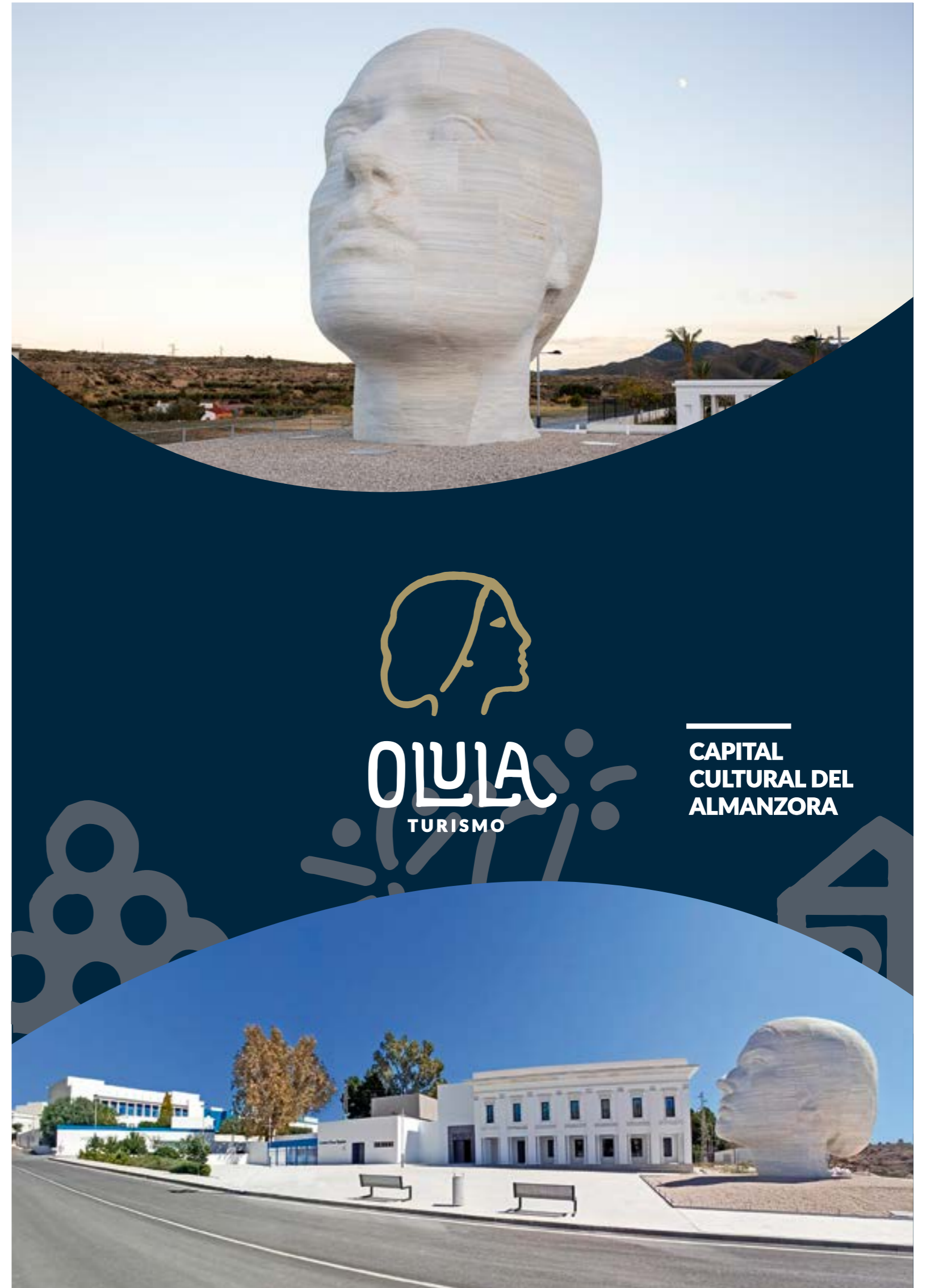


Rayado  
Striped

**MACAEL**  
el mármol



[www.macaelmarmol.com](http://www.macaelmarmol.com)



**OLULA**  
TURISMO

**CAPITAL  
CULTURAL DEL  
ALMANZORA**

# ÈCLOS<sup>®</sup>

by COSENTINO



RESISTENCIA SUPERIOR  
AL CALOR

CERO  
SILICE

NÚCLEO  
RECICLADO

DISEÑO INTEGRADO  
EN 3D

ÈCLOS es una superficie mineral de última generación desarrollada con tecnología avanzada de diseño por capas.

COSENTINO