

MADRMO

Architecture & Design

No. 4. October 2020

MADROÑOS 27 BUILDING
BUESO-INCHAUSTI & REIN ARQUITECTOS
BLANCO MACAEL MARBLE

EDITORIAL



“The architect of the future will be focused on the imitation of nature because it is the most rational, durable and affordable of all methods”. Antoni Gaudí (Reus, 1852 - Barcelona, 1926) already predicted it on the beginning of the XX Century. Today, that technology acts as the motor of society, -not only in professional life, but also personally-, the natural has become the refuge that gives us peace. The art of interior design, both private and public, as well as work spaces, tries to answer this demand and stands, more than ever, as an important contribution to the people’s happiness. Thus, a new issue of Mármol / Architecture & Design magazine lands in order to accompany you in the adventure of taking on this challenge. This publication, full of the latest stone trends, techniques, and applications,

explores and decodes all the key elements of the natural materials that the Macael Marble Brand offers to the architecture and design fields. Avant-garde natural stone and compact surfaces solutions that work to generate safety, pleasure and well-being. This edition shows modern and familiar buildings, relaxing and exotic hotels, designs that combine the traditional with the contemporary; water, light and life with an urban sculpture shape, and creations where art is part of the day to day. As usual, dear reader, we continue making these pages a path that guides towards the best design decisions and development of much-needed living conditions.

Editor
GLORIA CARRILLO SÁNCHEZ




TOPS ON TOP

Cindy Crawford on Silestone Eternal Noir



On Top

A product designed by Cosentino®

Encuentra inspiración en [cosentino.com](https://www.cosentino.com) | Síguenos   

Sumario

MÁRMOL / Architecture & Design

Editor
Gloria Carrillo Sánchez

Edited by
Asociación de Empresarios del Mármol de Andalucía
- AEMA (Andalusian Marble Industry Association)

Graphic design and editing
Gráficas Lucmar, S.C.A.

Printing
Gráficas Lucmar, S.C.A.

Legal Deposit: AL 2751-2019
Printed in Spain

This magazine is printed on chlorine-free paper

Magazine No. 04.
October 2020



25
/ARCHITECTURE
AND WATER



13

/MADROÑOS 27,
DESIGN FOR EXIGENT
URBANITES



43
/CASA ANTICA
BAROQUE SPIRIT IN
MACAEL MARBLE

06

/DEKTON®, BLANCO
MACAEL MARBLE, AND
ALBA LIMESTONE
FOR THE REMODELING OF THE SPANISH
COURT HOTEL, JAMAICA



31
/THE NATURE'S
POWER
BECOMING A
DESIGN HIT
ICONIC COLLECTION



52
/URBAN STONE



19

/TRADITIONAL
STONE FINISH
FOR A GROUND
BREAKING SPACE



37
/WHEN A STAIR IS
THE HEART OF A
HOME
BOOK-MATCH MARBLE





DEKTON[®], WHITE MACAEL MARBLE, AND ALBA LIMESTONE FOR THE REMODELING OF THE SPANISH COURT HOTEL, JAMAICA

Source: Cosentino

It is a resort in an idyllic spot, which demanded a remodeling project with the right materials. For this purpose, the Spanish Court Hotel owner, Christopher Issa, together with his design team, started a renovation process by using the appropriate elements to improve the establishment, adding value without subtracting personality.

The hotel housed multifunctional spaces and combined natural elements, -typical of its location-, with avant-garde touches. The remodeling project intended to conserve and take advantage of its original essence by installing materials that respected the environment's aesthetic and complemented its

natural beauty.

The project's solution was the choice of two varieties of Dekton[®] by Cosentino and natural stone, both for the indoors and common outdoor areas. Giving a new look to the rooms and its bathrooms was one of the main goals of the remodeling. In this zone, the Antrobus + Ramirez studio opted for Dekton Zenith. The designer wanted a white pavement and finding the right one, was a challenge. Finally, 6,967 squares meters of this material were installed. The Nordic white tone and matt finish of this ultra-compact surface, not only matches with any type of decoration, but also creates a spacious effect.





As a result of the Cosentino's professional support, the hotel's corridors were made of Dekton Danae, a sandblasted beige surface. This Spanish multinational company, which is a surface distribution leader for the architecture and design world, was in charge of the all materials' supply. In this case, the non-slip Grip+ finish was applied. It is an innovative and advanced treatment that guarantees the sliding resistance and gives a homogeneous and nice texture to the material. In addition, Dekton® is a great resistant surface to scratches, stains, water absorption, and temperature changes, what made it a perfect choice for these very busy areas.

The chill out and leisure spaces, like the Spa, which demanded a greater symbiosis with the location, are made in 'Blanco Macael' marble, a white natural stone, which is born in the Macael's quarries. It has a low porosity coefficient as well as, a high pressures resistance. This marble of pure white background and light grey veins, is a must in architecture and interior design for centuries.

The exterior pool pavement has been carried out with Alba limestone, a fossilized stone that follows the indoors' light colors trend but reinforces the natural character of the complex, which makes this project a total success.



MADROÑOS 27, DESIGN FOR EXIGENT URBANITES

Source: Mármoles Gutiérrez Mena

Fragmented volumes at different heights and oriented to different directions characterize the design of the Residential Building Madroños 27, located in Madrid. Its construction, which required the formal and functional adaptation to the environment, is based on lush vegetation gardens and stands on steel and glass sheets, and natural stone.

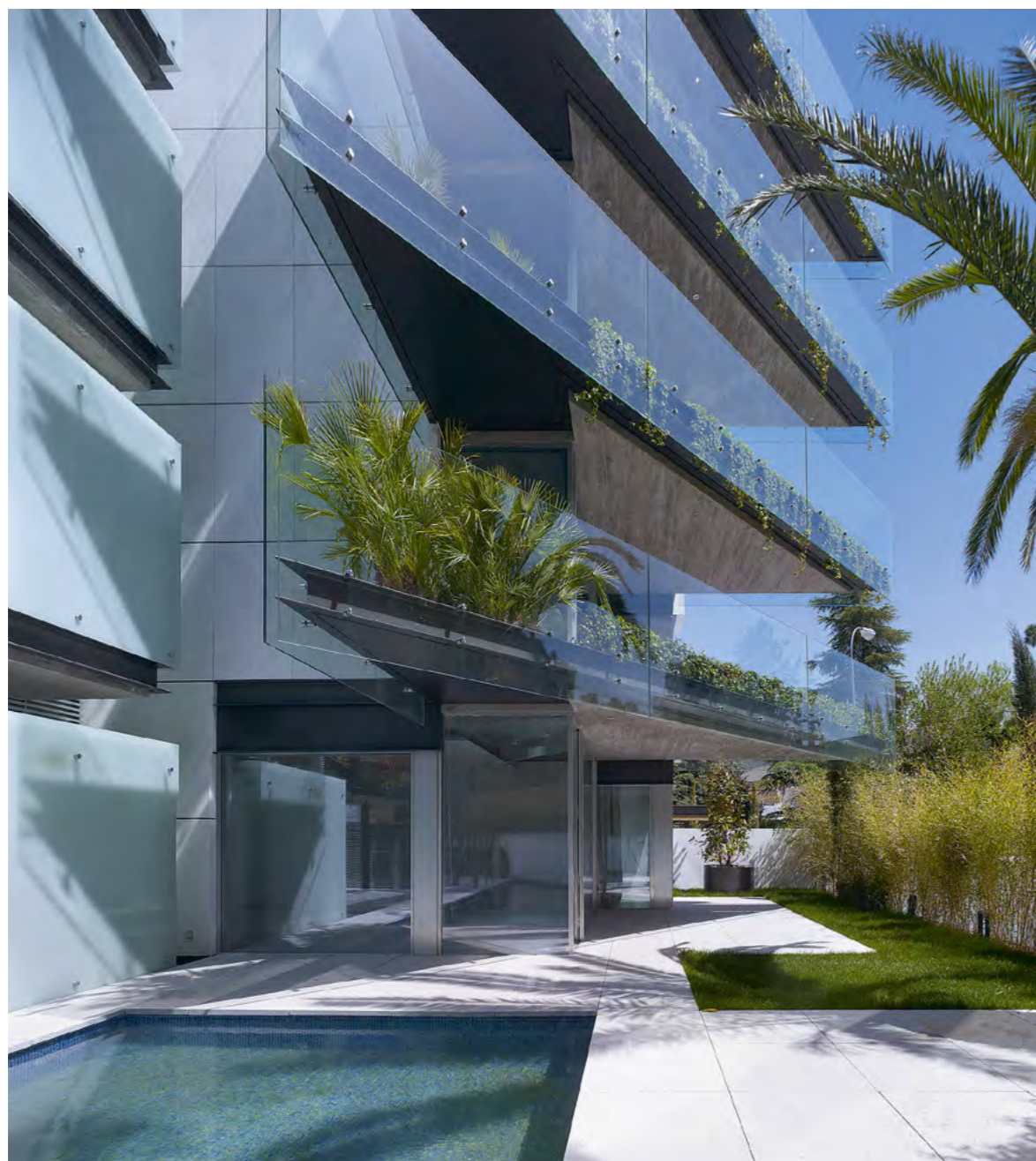
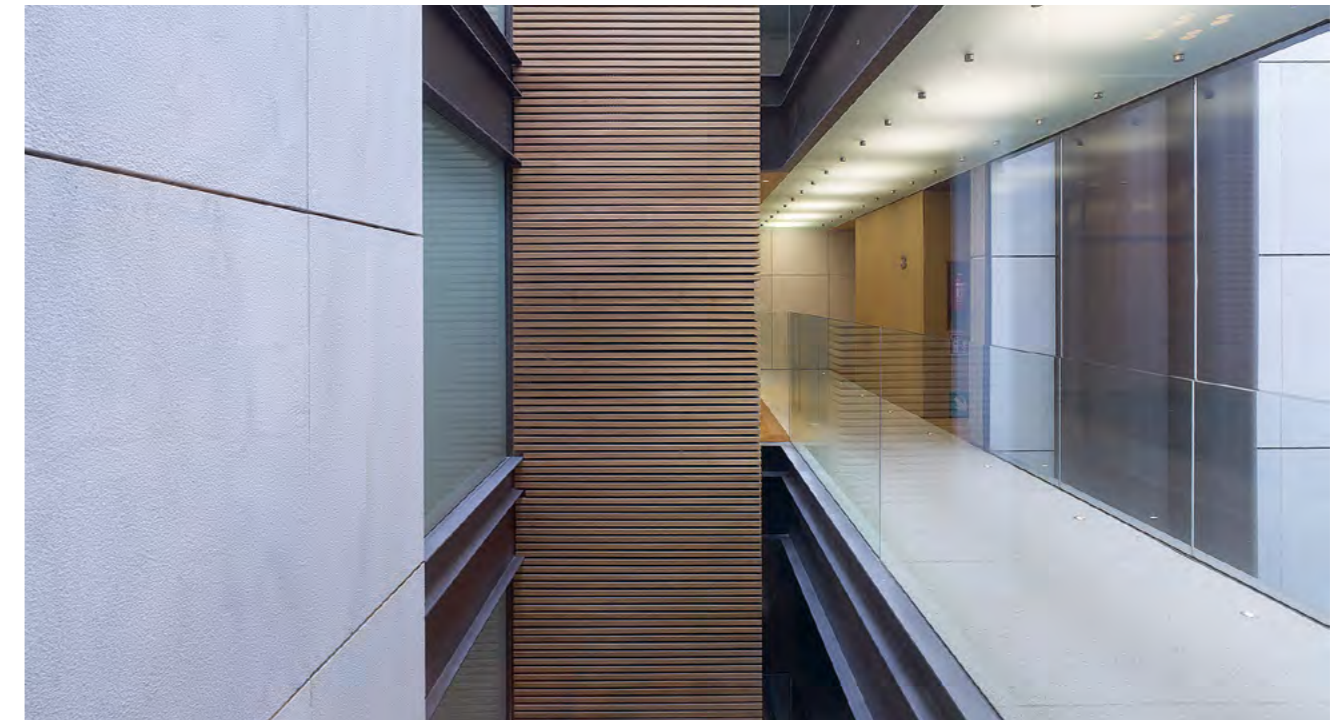
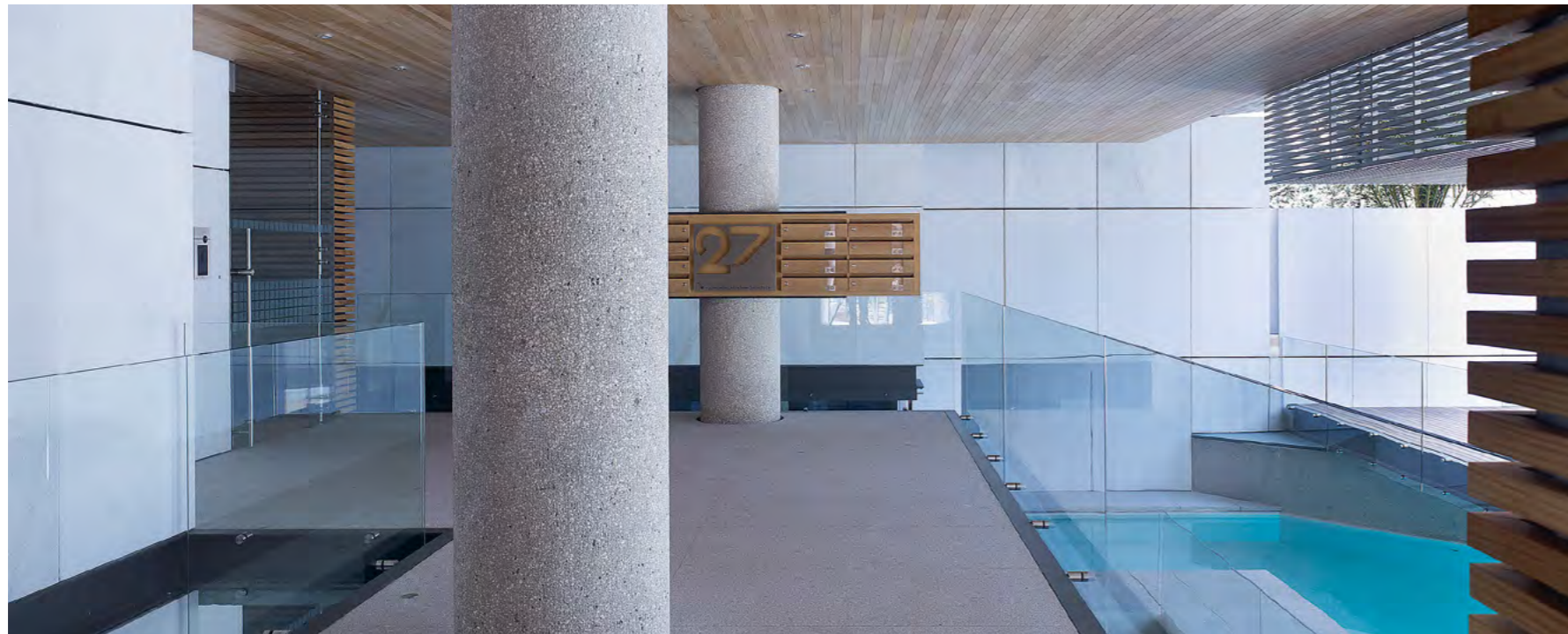
Both, the materials' choice and the design of all the construction details, are focused on two goals: on the one hand, creating an integrated, comfortable, familiar and private complex; and on the other hand, to guarantee its durability over time. It houses three types of homes: ground floor apartments with private pool and garden, intermediate floors housing with terraces, and duplex-penthouses where pool and garden are connected with the interior space through big glass panels.

Bueso-Inchausti & Rein Arquitectos studio has been in charge of this project where white marble has been installed in both, indoors and outdoors. 'Blanco Macael' marble has been the choice for the ventilated façade and the terraces, and the interior floors have been made in Blanco Sivec.

In total, 5,500 squares meters of the Macael's local natural stone in bush-hammered finish, have been used for the façade. The big format pieces of 250x100x3 installed, have involved a challenge in the project because of this marble's technical complexity.

Its great properties like medium grain size, compact nature, and resistance to pressures, temperature changes, and durability over time, make the 'Blanco Macael' marble a suitable solution for this outdoor building.





The interior flooring, made of Blanco Sivec, a Macedonian stone, reinforces, together with others elements like wood and glass, the neutral and minimalist aesthetic that characterizes the project. Mármoles Gutiérrez Mena has been in charge of all the stone supply and installation. The company, with own Blanco Macael marble quarries, covers all the production process; from the extraction to the processing and distribution. Based on Almería (Spain), the company has previously worked with the studio and, in this case, the technical team had to meet a tight delivery deadline that did not mean a lower quality in the final work result.

The residential building is placed in an industrial origin area and it breaks with the traditional architectural aesthetic. The façades are 45 degrees rotated from the orthogonal boundaries of the plot. This, not only avoid the direct front views between apartments, but also, it skips the degraded northern area of the district. In addition, this construction makes all the homes enjoy of an excellent 180 degrees southern panoramic view.

Project's author: Bueso-Inchausti & Rein Arquitectos.

Photographs: Alfonso Quiroga

TRADITIONAL STONE FINISH FOR A GROUND BREAKING SPACE

RASTRO MAISON DU DESIGN

Source: Tino Natural Stone







PANELES ULTRALIGEROS DE PIEDRA NATURAL
GRAN FORMATO PARA ARQUITECTURA E INTERIORISMO



GRAN
FORMATO



LIGEREZA



RESISTENCIA



FÁCIL
INSTALACIÓN



NATURAL



TINO NATURAL STONE

MARBELLA
Ctra. Na. 340, km 175 Río Verde,
Puerto Banús, 29660
(+34) 952 906 149

MADRID
Calle Padilla 30,
Madrid, 28006
(+34) 917 811 857

www.tinostone.com
www.stonesizepanels.com

“Creativity is intelligence having fun”, as Albert Einstein said. Being creative in interior design, is being able to create original and innovative projects that impact society. For this end, architects and designers carry out a deep process to connect with their own ideas. They investigate and explore existing things to combine, improve and/or reinvent them in order to find the inspiration.

Rastro Maison Du Design, from the architects Javier Martín and Graciela León, is born as an example of a design reinvention. It is a singular interior design center located in Costa del Sol (Málaga, Spain), which has been projected as an avant-garde and luxury villa. Tino Natural Stone, a company specialized in luxury projects, has executed all the natural stone works carried out.

The combination between noble materials and innovative

pieces in the space, contrasts with the traditional finishes applied to the natural stone, and creates a stunning and contemporary look. The Blanco Atenea marble stair, which combines two different finishes, is a good example of that.

On the one hand, a honed finish has been applied to the steps' surface, giving a matt and a velvet-like appearance to this white stone with light grey veins. On the other hand, split face finish has been used for the big format steps' edges at the end of the stair. This technique is the ground breaking point of the decoration because, although it is normally used for rustic environments, it is getting a boost for new designs that look for reinforcing the stone expressivity and enhancing its naturalness. Such a workmanship, which is based on an artisan process, is impossible to carry out in porcelain materials, for example.



One of the bathroom furniture has been made under the same method. The split face finish, which has been applied to the furniture front, turns the piece into an apparent stone block that has been split or cut manually but, in this case, with more relief and bumps. This sink design continues to the terrace being a table.

Negro Marquina marble has been installed in the indoor floors. In some areas, it is combined with Blanco Atenea marble, as it happens in the stone 'carpet' with geometrical motifs, located at the central corridor. This space, made with a polish finish, has also a great ornamental weigh. The polish finish gives to the surface a high level of shine and reduces the material porosity, which means an extra protection against external agents. It is just perfect for pavements.

With this same material, Negro Marquina, a sink furniture of another bathroom has been produced. This time, the design team opted to a polish surface for the whole piece, excepting an object holder placed above the sink, which has been made in zero finish. This finish is visually grainy and highlights the material's color, especially in dark tones.

In the studio outdoors, like a Mediterranean house, a lot of plants and water make the nature being protagonist. The pavement is made of Royal Travertine, using again the same finishes combination as the indoors; honed for the top, and split face for the edges of each piece.

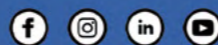
This techniques recovery, previously used for traditional and rustic spaces' creation, together with some details like natural and artificial points of light, glass elements, and straight lines designs, make this unique showroom project a great success.



CUELLAR
STONE 1958



cuellarstone.com



ARCHITECTURE AND WATER

Source: Cuéllar Stone

Fuente de los Descubrimientos arises each day in front of the Mediterranean Sea and surrounded of palm trees. It is the harbor access and Santa Ana Castle entrance, which is a Nasrid temple that today, is a scenic space and a city icon. Roquetas de Mar, (Spain), a touristic center of the Almería region, that has a fishing origin, is the location of this sculptural ensemble, which represents the symbiosis between light and water.

The work is completely made in Blanco Macael marble. The project development and execution have been carried out by Cuéllar Stone, which is a natural stone special projects company, which works from the design phase to the installation one.



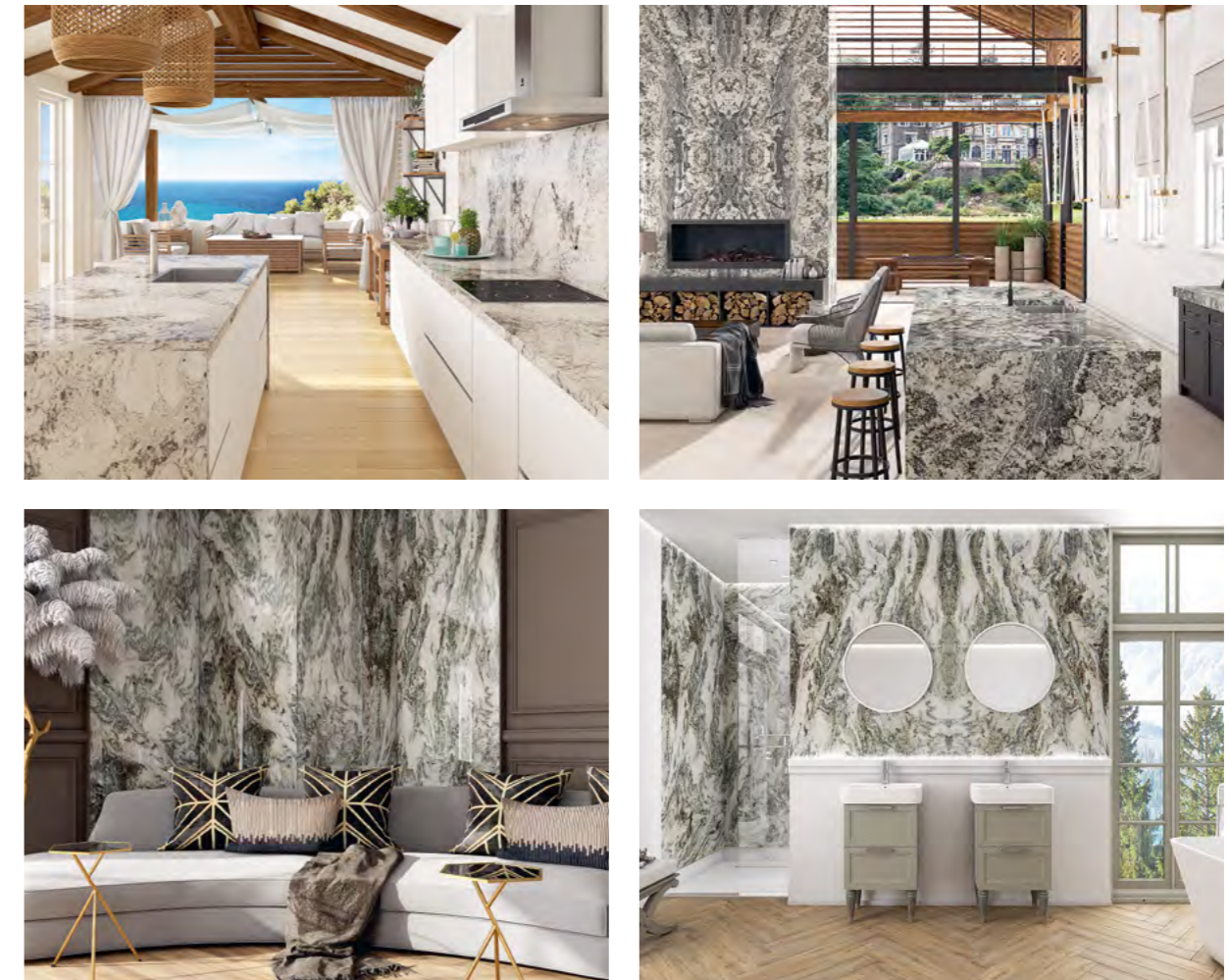
Three slender shapes, that emerge as a spiral, characterize the piece's aesthetic. They are a strength and dynamism representation, rise to the sky, and 'dance' with the water as if they were waves. The inclined elements are similar to a ship's bow, they appear curved and create a play on shapes where all the pieces act as a set, whose energy goes beyond the limits of its structure.

The project is an original idea of the sculptor Valentín Sabiote Ortiz and the architects Miguel Ángel Cuéllar and Antonio Padilla. It stands on a high podium twelve meters in diameter. The total diameter, including the pond and its border, is thirty-one meters. The mainsail's height reaches nine meters.



Fuente de los Descubrimientos is not the first outdoor project that Cuéllar Stone executes and installs. Some national and international works as Mujer del Almanzora of the famous sculptor Antonio López, Speedforms in the Garden of Pininfarina, which was located in Miami (USA), or the tribute fountain to the 27 generation, installed in Seville (Spain), are examples that, these natural stone professionals, have been carried out.





THE NATURE'S POWER BECOMING A DESIGN HIT

ICONIC COLLECTION

Source: Mármoles Sol

Opalo, Zafiro, and Esmeralda White is a winning trio of accents in interior design. These three types of stones, which are born in Indian and Brazilian quarries, complete the autumn 2020 new collection of Mármoles Sol. Iconic collection is a real piece of nature at the design service. It is a jewel that lies on the ground to dress up the most sophisticated spaces. Each vein that crosses these stones, tells us a story of formation, history, authenticity, and, due to its nature free of resins, also of sustainability.



Opalo is an extremely rich of tones granite. It has a beige color background with a chromatic range of earthy tones grain, and stands out by its sparkling silver inlays. Even although it is suitable for any type of surface, this stone is perfect as a countertop and kitchen coating in minimalist spaces that seek personality and elegance.

Zafiro is a material that combines colors within a chromatic range of greens and blues. Its neutral background makes more prominent the rich, changing, and harmonious veins that cover it. It is a play of curvy and winding shapes that, like Opalo, is capable of turning an environment into something unique. Furthermore, Zafiro, which is perfect for countertops, floors, and coatings, multiply its design possibilities with the book match technique.





Esmeralda White is a pure extract of organic matter. Looking at its veins is like being surrounded of nature and becoming captivated by its cleanness. Its white background contrasts with the numerous lines in different green tones. It conveys serenity, harmony, and life. This granite, which has a great design capacity, is just suitable for floors and coating decoration.

These three materials are already available in the Mármoles Sol logistic centers. They are normally installed in pieces of 3x2 meters, which helps to reduce the joints number and enhances the visual homogeneity of the space. In addition, the mirror finish, a high-gloss termination, involves an added value to the surface.



PROYECTOS EN MÁRMOL

CAMAR



RÉPLICA ALHAMBRA DE GRANADA - ARABIA SAUDITA



BANCO DE ESPAÑA - MADRID



VIVIENDA PRIVADA - MARBELLA



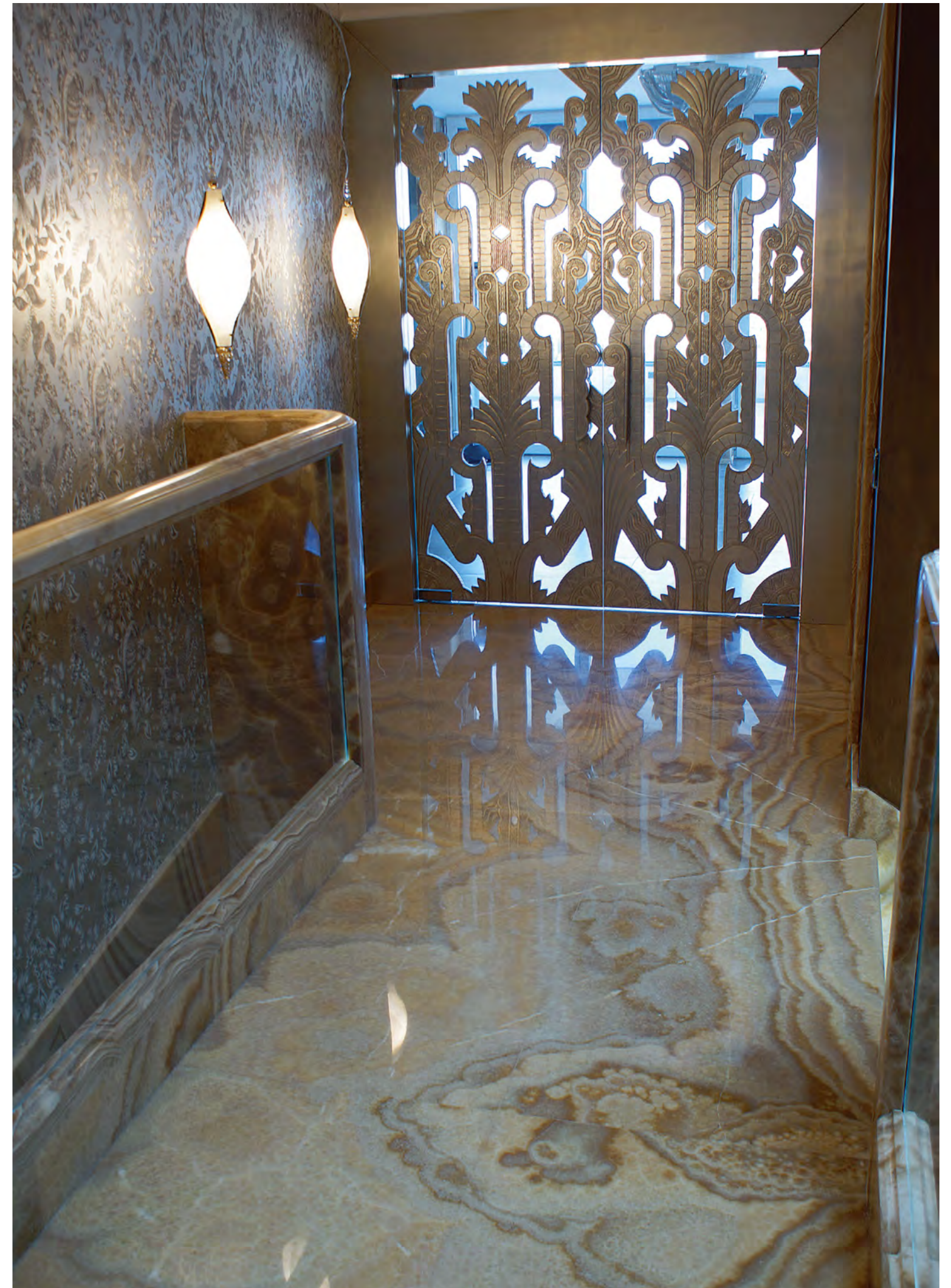
CENTRO CANALEJAS - MADRID



WHEN A STAIR IS THE HEART OF A HOME

BOOK-MATCH MARBLE

Source: Mármoles Camar



This project, which runs away from the geometrical simplicity and minimalism, is an example of how technique and creativity can work together to create a piece that represents much more than a crossing point. The stair, that connects five floors, is the spinal cord of a villa located in the magical Budapest. It is the nerve center of a home that reminds to the tsars' time. Different deco elements in other tones complement it and both, the design, as well as, the material and its application, turn it into a real sculpture.

Mármoles Camar, which is a stone company specialized in cut to size and singular projects execution, has been in charged of this special work. The stair has been made in Honey Onyx. This is a semi-precious material with organic and sumptuous shapes which unique and unrepeatable pieces are obtained from. The stone is installed with the book-match composition, which is a technique that makes the design evolves from a natural stone slab, to a symmetrical set where the veins have continuity between one piece and another. The result is a mirror effect that highlights, even more, the purity and naturalness of this wonderful material.



A good knowledge of the stone work, as well as, the installation, is crucial in this project phase. This time, the Spanish company carefully cut and selected the pieces to present them before its installation. In this way, they planned and saw in advance, the perfect composition that would go to the villa.

The backlighted steps closed the space's decoration. This resource is widely used in interior design lately as it enhances the veins brightness and promotes the space's ornamentation. The light reveals the tens of thousands of small quartz crystals that make up the onyx, which produce its enormous variety of colors, textures and patterns. This material is also perfect for natural light.

The three main elements that compose this stair's project, make that, climbing it every day, despite the fact that the house has an elevator, was an exercise worthy of a tsar.

PIMAR
S T O N E

calidad
que nos distingue

www.pimarstone.com

Paraje La Fuensanta, s/n. - 04869 FINES (Almería) - Spain
Teléfono +34 950 634 152
ventas@pimarstone.com



BLANCO MACAEL GRIS MACAEL GRIS ALBORÁN

JUANTIJERAS
mármoles

www.juantijeras.com

Síguenos etc.

Pol. Ind. Rubira Sola, Parcela C-1
04867 MACAEL (Almería-España)
Tel.: 950 445 440 / 969 362 141
info@juantijeras.es

CASA ANTICA

BAROQUE SPIRIT IN MACAEL MARBLE

Source: Estudio Jiménez & Linares

It represents a crossroads where architecture, decoration, and art converge. It is called Casa Antica, a 190 square meters apartment's project, located in a historical house in Seville city center (Spain). Its dynamic and expressive design, achieved by light, ornamentation, chromatic contrasts, and noble materials, make the baroque style as the central axis of the decoration.

Its structure has been organized around three main areas. In the first one, the living-room and kitchen are located. It has exterior views to two singular Sevillians monuments; the Giralda and Patio de los Naranjos. The second one houses the entrance and small yards. Long time ago, these

areas were part of the streets of the Alcaicería de la Seda, an old neighborhood of merchants and artisans from Arab times. And finally, there is a more private third area, where four bedrooms and three bathrooms have been placed.

The interior design purpose of the Jiménez & Linares studio looked for the distinction and calm by means of warm colors and natural light, but also focusing on the volumes, symmetry and strength concepts. So, the floor of the main rooms has been made as a marble carpet composed by different geometries and background in Blanco Macael marble. In the entrance, this marble has been combined with Amarillo Indalo, also from Macael,







Almería (Spain), and Negro Marquina. This three marbles fusion is also in the living room while, in the kitchen, a two-color pavement, made in Blanco Macael and Marquina, has been installed. All these designs take up geometric motifs of the Seville Cathedral.

As a kitchen countertop, an exotic granite box placed in just one piece has been chosen, which is a touch that reinforces the sobriety of the whole. The bathrooms, which have a similar aesthetic, are also completely made in natural stone. Once again, the Blanco Macael marble is the background for floors, walls and countertops, which mix stones of different tones.



Artesanos
del mármol

Mármol
ARTISOR

Pol. Ind. Rubira Sola 2ª fase Parcela T3-C / 04867 Macael (Almería) España / Tlf.: +34 950 126 113 / +34 630 281 454
info@marmolesortisor.es / www.marmolesortisor.es

f t in

Some singular elements also stand out in the project. For example, art works of the religious image makers and Sevillians painters, as the white marble head of the sculptor Antonio Illanes, the oil and watercolors by the painter Paco Broca, and the 'Monumentos Arquitectónicos de España' engravings series from the Royal Academy of Fine Arts of San Fernando on the Alhambra of Granada. In addition, antique items have been recovered from the owner's previous home, as it is the bed headrest in the main bedroom, which has been made from a wood curtain with gold leaf. There is also a coffee table in wrought iron made from historical grille and the English desk, both in the living room. All these ingredients also represent, in this marvelous architectural framework, a very personal story.



URBAN STONE

Andrés Molina Franco, Stone Advisor

“I found Rome a city of bricks and left it a city of marble”. This Augustus Emperor quote, said right before dying, shows the aesthetic and symbolic change that modern cities have been carried out.

The stone is the natural construction material by excellence. Its physical characteristics and wide historical background, provoke feelings and comfort hard to match for no other material. His aging, which is prolonged and beautiful, possesses the dignity of natural cycles. The architectural intervention in buildings and urban spaces has to be related to the landscape where they are located in. The stone links us with history and our culture, transmits the perceptible message that it is a natural part of the environment of the human being, and communicates wealthy, depth, elegance and quality, like no other material.

The natural stone stands out as a material that widely achieves the expectations of professionals and users assuring the quality and durability of the new projects. Today, that the predictable limits of the modern range of materials have been recognized, architects and landscapers look for new possibilities to express ideas in the solid values of the stone.

In the Macael Marble Region, some companies which collaborate with prestigious architects and designers, match the inherited experience of their artisans, and continue paying attention to the latest technological advance's implementation.

Therefore, in the field of urban furniture, well design, timeless, high quality and innovative natural stone products are created. The essential characteristic of these products is their adaptability to different public environments, without coming into friction with other elements and/or architecture. They are communicators, since they transmit by themselves, quality, good work and formal and technical solvency.

They are intelligible, since their uses and their operation mechanisms, are easily understood by the public and installers. They are interrelated because they form, with each other, a family of objects where, even though each one has its own characteristics, are linked by quality and innovation.

They are timeless and distant from passing fashion or temporary trends, both in their forms and in its components. And, above all, they are comfortable, since they meet with ergonomic requirements to make its use pleasant to the widest possible range of population.

With these fundamental premises in the design, unique pieces are born from the union of the craftsman and the designer:

Fountains as Alta (photo 1), designed by Jordi Garcés, Architect (Barcelona, 1945), which with a strong monolithic character, combines stone and steel giving a great compositional purity and a guarantee of solidity.

Tree surrounds by Quim Larrea, Architect and designer (Córdoba, 1957), called Arboré (photo 2). They are characterized by its modular construction in the shape of a blade around the tree, as well as, its saw cut treatment applied, which achieves the proper roughness to make them non-slip.

Planters as Botánica (photo 3) by Gabriel Teixido, designer (Barcelona 1947), Cestae de Silvia López, designer and sculptor (Almería, 1977) or Fémina (photo 4) by Oscar Tusquets Blanca, Architect and Designer (Barcelona, 1941). They are sophisticated marble containers, where the independence between the plant and the pot, allows easy maintenance, as well as, changing or renewing the type of vegetation.

The Hemen wastebasket (photo 5) by Txema García Amiano, designer and design editor (San Sebastián, 1948) builds a wall structure, that holds a stainless-steel container, with two large stone slabs. The combination of these two noble materials, steel and stone, make this element a unique piece with great personality.

Light beacon made of stone as Lita by Gonzalo Milá, designer (Barcelona, 1967), and Poniente (photo 6) by Silvia López. They, which are suitable for garden areas and paths, use marble as a diffusing screen, allowing a nice and charismatic light.

The benches by Daniel Nebot, designer (Barracas, 1953). STO (photo 7), which includes a modular seating system, and T (photo 8), where the author gets to do a light piece made of marble, that contrasts with the material reality of natural stone. Nebot has also designed the bollard called Tona, an easy to locate work of eccentric and cone-shaped revolution. The fact that its edges disappear, generates an element that is highly resistant to possible attacks.

The city returns looking for the intrinsic beauty of the stone.



Foto 4



Foto 8



Foto 3



Foto 6



Foto 7



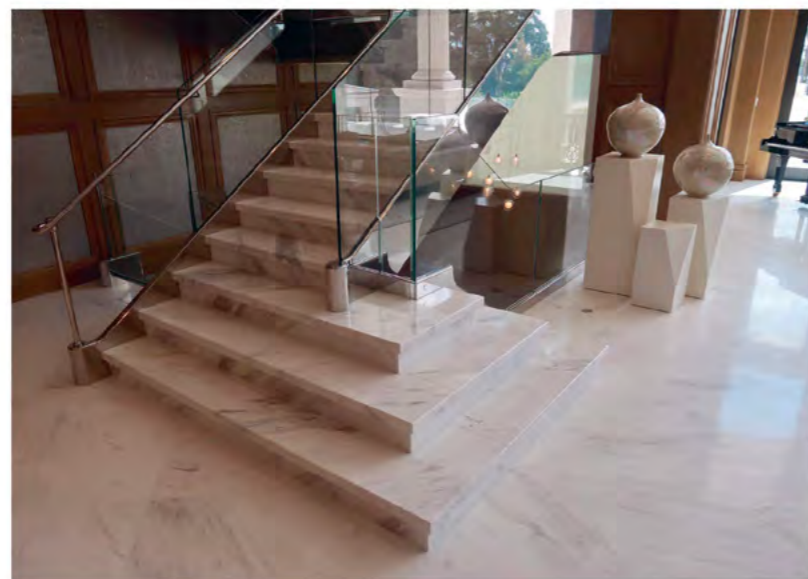
Foto 2



Foto 5



Foto 1

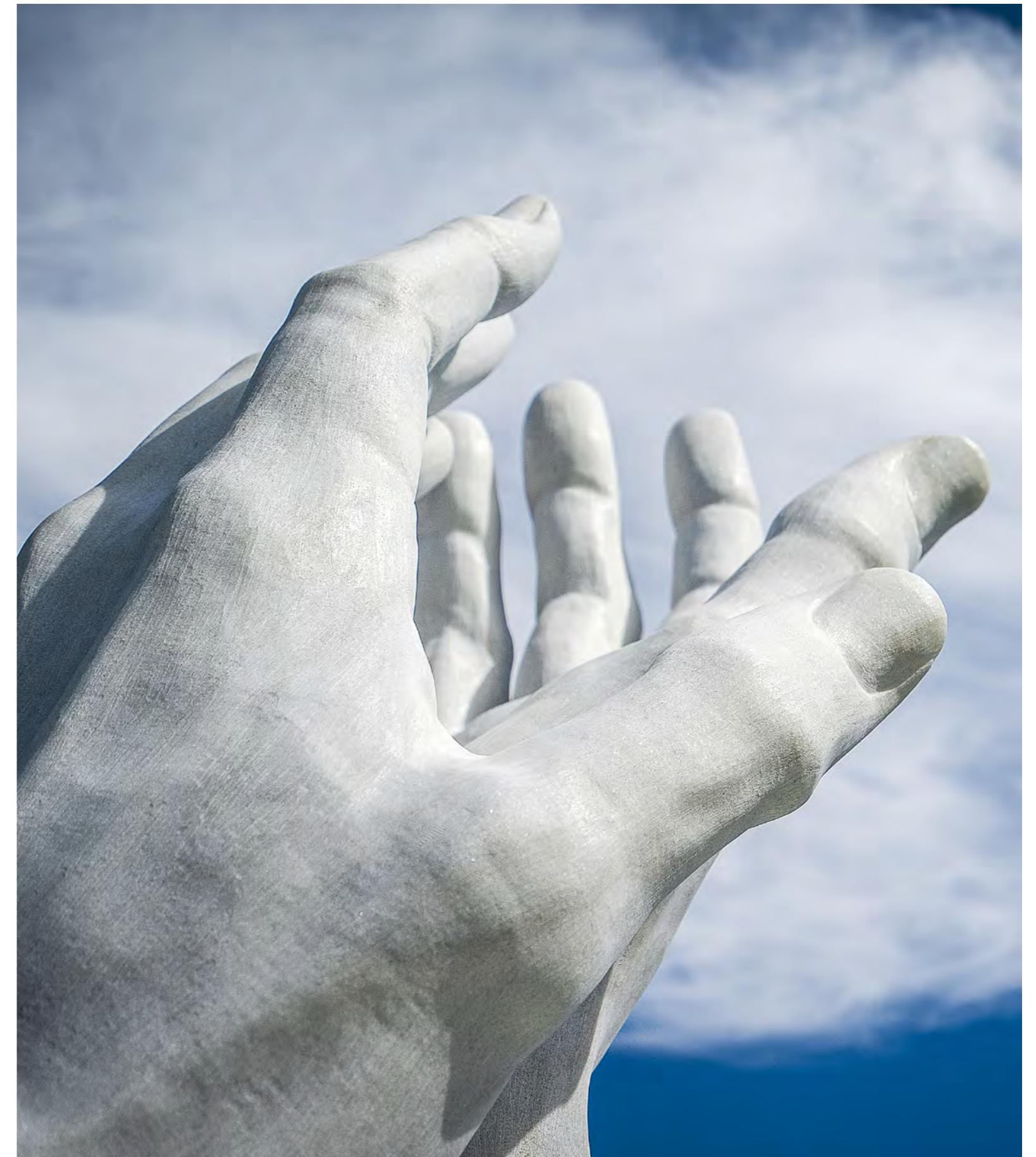


La profesión de nuestros escultores reflejada en proyectos.
"The work of our sculptors are reflected in our projects."

www.arriagastone.com

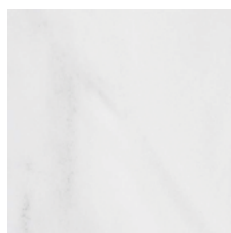
Piedra Natural Nessuna by Arriaga Stone

Blanco Macael marble Sculptures - tribute to professionals during the Covid-19 pandemic, donated by the Andalusian Marble Industry Association. Made from the original model of the sculptor Navarro Arteaga.

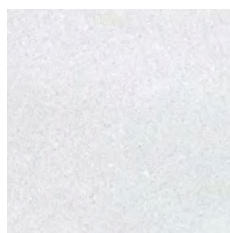




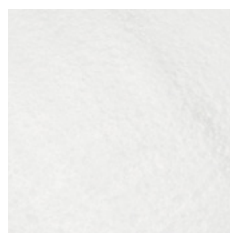
Abujardado
Bush-Hammered



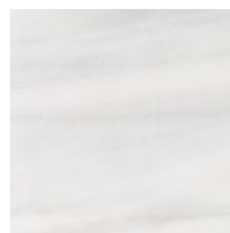
Apomazado
Honed



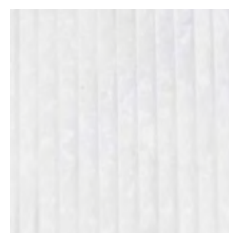
Arenado
Sanded



Envejecido
Antique



Pulido
Polished



Rayado
Striped

MACAEL
el mármol



www.macaelmarmol.com

