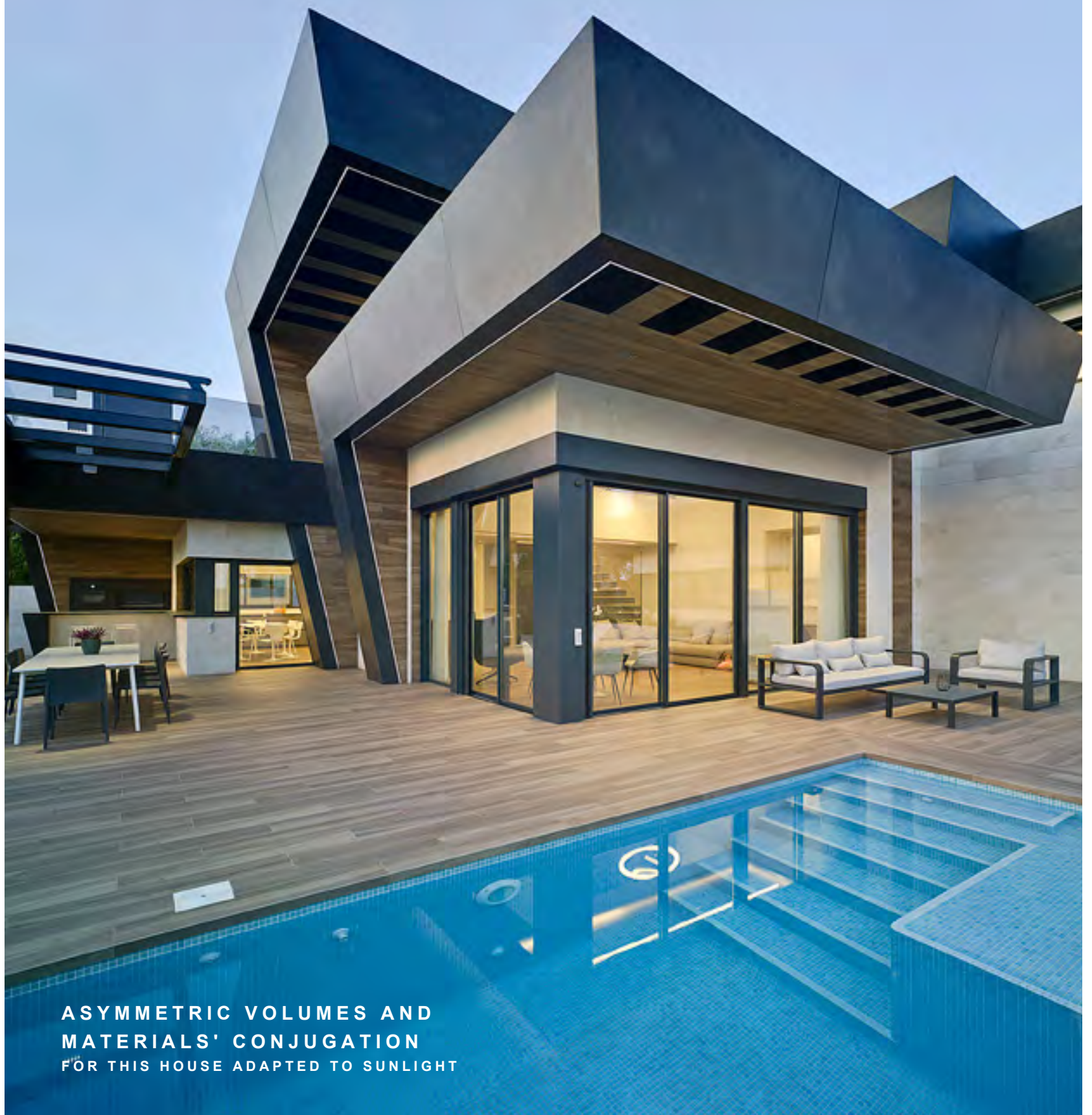


MÁRMOL

Architecture & Design

No 6. June 2021



**ASYMMETRIC VOLUMES AND
MATERIALS' CONJUGATION
FOR THIS HOUSE ADAPTED TO SUNLIGHT**



EDITORIAL



June is born from the last spring rains. The warm summer breeze and the new issue of our magazine come with it. Hope is in the air and we gain strength to reset and keep going creating magical beauty. We want to attend to the most urgent thing: living and compose spaces that give us life. In a dialog between landscape and architecture, natural stone and compact surfaces become essential for sustainability, habitability, and wellbeing. With great will, we have worked in these pages to reflect part of what the Macael Marble Brand gives to the architecture and design world in order to

fulfill that precept. In this natural materials' conglomerate, where innovation, internationalization, and know how are key factors, is also important good listening for being able to successfully respond to the most exigent proposals. We present on this paper initiatives that reinterpret the construction's concept to apply the knowledge for the environment conservation; architecture for a today's society, where happiness and creativity are demanded beyond homes; as well as spaces and design of elements that remind how relevant is quality of details for the interior decoration.



www.macaelmarmol.com



Editor
GLORIA CARRILLO SÁNCHEZ

Summary

MÁRMOL / Architecture & Design

Editor
Gloria Carrillo Sánchez

Edited by
Asociación de Empresarios del Mármol de Andalucía AEMA
(Andalusian Marble Industry Association)

Graphic design and editing
Gráficas Lucmar, S.C.A.

Printing
Gráficas Lucmar, S.C.A.

Legal Deposit: AL 2751-2019
Printed in Spain

This magazine is printed on chlorine-free paper

Magazine No 06.
June 2021



25

**/'CARBON TO
ROCK' IN THE
BIENNALE
ARCHITETTURA
2021**

**ARCHITECTURE'S
REINTERPRETATION
THAT MITIGATES
BLOBAL WARMING**



37

**/MARBLE FURNITURE:
SCULPTURAL ON
THE OUTSIDE,
ULTRA-LIGHT ON
THE INSIDE.**

**URVANSTYLE BY VIANNY
SANGUILY**



12

**/VELÁZQUEZ 34
GIVES A TWIST TO THE
NATURAL STONE
CONSTRUCTIVE
SOLUTIONS**



31

**/COLOR
EXPLOSION IN
'LOS HAMPTONS'
2021 CASA DECOR
SPACE BY FRAN
CASSINELLO**



07

**/KOTELNICHESKAYA
RESIDENTIAL
NATURAL STONE, LIGHTS, AND
SHADOWS**



19

**/ PRUDENTIAL
TOWER,
EFFICIENT
ARCHITECTURE THAT
IMPROVES PRODUCTIVITY**



45

**/ASYMMETRIC
VOLUMES AND
MATERIALS'
CONJUGATION
FOR THIS HOUSE ADAPTED
TO SUNLIGHT**

PROYECTOS EN MÁRMOL

CAMAR

CAMAR

RÉPLICA ALHAMBRA DE GRANADA - ARABIA SAUDITA

BANCO DE ESPAÑA - MADRID

VIVIENDA PRIVADA - MARBELLA

CENTRO CANALEJAS - MADRID

ANASOL

WWW.CAMAR.ES +34 950128123 CARRETERA DE TAHAL S/N 04867 MACAEL-ALMERÍA-ESPAÑA

KOTELNICHESKAYA RESIDENTIAL

NATURAL STONE, LIGHTS, AND SHADOWS

Source: Mármoles Camar





If it is about choosing the perfect combination to create sophisticated spaces, there is no safer bet than the play of light and dark colors. In this luxury apartments' project, which is in a quaint area of Moscow, natural stone is the main character. More than 2,300 square meters of beige and black tones marble have been installed. The purpose was highlighting the brightness as well as creating an elegant and timeless atmosphere. Crema Marfil marble, from the company Mármoles Camar, which is a specialist stone supplier and cut to size projects' executor, predominates in the space. It dresses the hall walls of the complex, which is composed by four buildings of eight floors each. This natural stone, that has a homogeneous beige background with light earth tones and off-white lines, guarantees the brightness level in the space without the need for using pure white. It is a very versatile stone, in terms



of variety of interior applications: claddings, floors, bathroom countertops, kitchens, showers... It is frequently used for designs that look for style without giving up on warmth.

A combination of Bottichino Fiorito, which is an Italian marble of beige and off-white tones, and Black Bamboo, has been installed in the floor. Black Bamboo, which represents the contrasting cheer in the space, has been used for the elevators' entrances and for finely worked marquetry terminations in the floors of the main entrances as well as, in the apartments' ones. This marble, which has a black background with strong lines of a variety of white, beige, and ochre colors, becomes a key element in any design project. In this case, it adopts a rectangular mosaic format so that, visually, the space is transformed into a fair game of

geometric spokes and figures which changes the usual tsarist opulence, for an avant-garde construction.

Before the production process, Mármoles Camar has been in charge of an important data collection work by 3D laser scanner, which is a software that improves the production process and reduces the execution time.

From the room scan, a three dimensions model is generated, which different needed measures to prepare the manufacturing drawings can be taken from. It has a maximum precision of +/- 2 millimeters in 100 meters of distance and guarantees absolute measurement accuracy in any project. By obtaining the geometry and current state of a construction, it solves the difference that may exist between the architect's measure in plan and the real work execution.

VELÁZQUEZ 34

GIVES A TWIST TO THE NATURAL STONE CONSTRUCTIVE SOLUTIONS

Source: Cosentino

Sustainable building is one of the XXI Century's big challenges and façades play a key role in pursuing that goal. From its proper construction depends on, for example, the building bioclimatic behavior as well as, the greater or lesser degree of energy savings. Velázquez 34, which is a 6672-square-meter building on seven floors dedicated to offices, stands as an icon responding to these and other challenges, both technical and aesthetic.





The project is based on the comprehensive remodeling of exteriors and interiors, in terms of design and functionality, of a building with a privileged location: the union of the Goya and Velázquez streets in the heart of Madrid's Golden Mile. Both its geographical location in the city and its focus, which aimed at improving the space's habitability and sustainability, demanded a high level of excellence. Thus, a double façade was installed. In it glass and natural stone coexist and form a perfect tandem in pursuit of energy efficiency and design. This exterior renovation work, which has been carried out by the prestigious architecture firm Rafael de La Hoz in collaboration with Cosentino, replaced the existing façade by a new layout one. The huge solid pieces of marble yield robustness and stone resistance to the building, but also elegance and avant-garde classic style, what characterizes this material. Each column, which Nogal Travertine has been used for, is a unique piece that adheres to the concrete, allowing visual transparency

and sunlight penetration. Exterior textile blinds, which are automatically activated according to the solar incidence, complement the energy optimization objective.

The search for silence has also been another of the project's precepts, in addition to the choice of the correct material to minimize the devastating effects of a façade which is exposed to traffic and population mass transit. Cosentino's Natural Stone offered the adequate resistance and durability benefits against dirt and damage that the location can cause, in addition of giving, in terms of aesthetics, uniqueness to the project. In this case, Nogal Travertine is a stone with a beige background, light white veins, and large cavities on its surface, whose main mineral is calcite. It is said that it is a 'living stone', which grows over time as the lime of water -calcium carbonate-, is deposited on the surface forming layers and increasing its thickness. The travertine has fossils that are trapped between layer and layer of lime, although it is a very slow and very long-term process.

Grupo Cosentino, which is based in Almería, is a multinational leader company in surfaces distribution for the architecture and design world.

On this occasion, it repeats collaboration with the architect Rafael de La Hoz, who already designed the façade of Lagasca 99, that is a residential building in Madrid, also made of 'Travertino de Piedra Natural' from Cosentino.

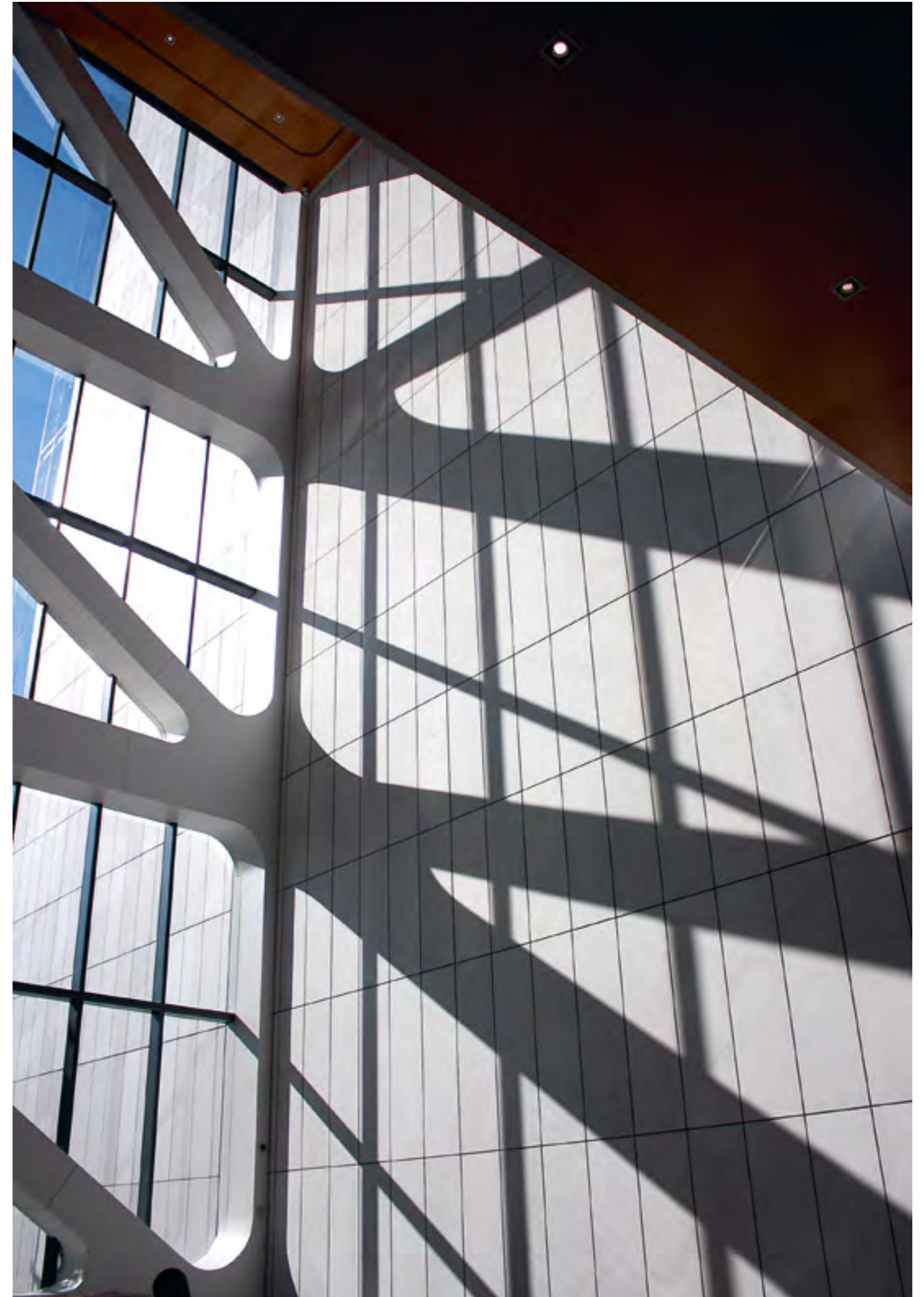




PRUDENTIAL TOWER: EFFICIENT ARCHITECTURE THAT IMPROVES PRODUCTIVITY

Source: Mármoles Gutiérrez Mena







Beyond its conception as an innovative work space, the Prudential Financial headquarters construction in Newark, New Jersey, is an example of a development model in the city and an achievement in the employees' personal wellness conquest. In addition, the objective of reducing environmental impact, through a complete set of sustainable design initiatives, was its architecture's engine of success. The building rises with two vertical layout planes joined by a large glass gallery, whose interior is entirely coated in natural stone. The structure's idea was the natural light attraction and the creation of visual connections to the exterior. To reinforce the space's luminosity, among other aspects, the project prescribed a white stone. The answer to that premise was the use of Blanco Macael marble that, in addition to meeting the aesthetics requirements, it also did it with the technical ones.

The work, which was directed by the architect Kohn Pedersen Fox, also required a proper material to withstand extreme weather. Consequently, the project includes 8,000 squares meters of this natural stone from Macael, Almería (Spain), which is characterized by high resistance to pressures, temperature changes, and passage of time. This white marble of medium grain size and compact character comes, in this case, from quarries of the company Mármoles Gutiérrez Mena,

which was in charge of all the marble works. It was installed all over the interior common areas in large-format pieces of approximately 265x140x3, which are an unusual measure for a white stone and what increased technical complexity, but added value to the design.

The complex includes, apart from office and conference spaces, a health center, a cafeteria with access to the roof garden, and an interior garden on the ground floor. An advanced stormwater management strategy that is combined with highly efficient fixtures, reduces water demand and saves the city millions of gallons of drinking water annually. The high efficiency individual lighting and thermal controls are intended to increase comfort and, consequently, productivity.

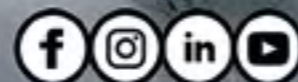
This demanding project required, as a culmination, a very tight delivery and execution time for the natural stone work, so it was necessary count on both a factory and a quarry with high production capacity. As a result of a close collaboration between the work's direction and Mármoles Gutiérrez Mena, the project took shape as planned. The company, in addition to having its own marble quarries of 'Blanco Macael', focuses its activity on the entire productive process, from extraction to transformation, and distribution of stone.

CUELLAR

STONE 1958



WWW.CUELLARSTONE.COM



‘CARBON TO ROCK’ IN THE BIENNALE ARCHITETTURA 2021

ARCHITECTURE’S REINTERPRETATION THAT MITIGATES GLOBAL WARMING

Source: Cuellar Stone

Project’s Author: IGNEOUS TECTONICS, Cristina Parreño Alonso and Sergio Araya Goldberg

“An architect is a technician trained to solve the needs of others”. With this quote, the architect and designer Charlotte Perriand (1903 – 1999), defined a work’s philosophy based on the movement’s reinterpretation to adapt it to the people. She was an independent professional, who collaborated with Le Corbusier and Pierre Jeanneret, as well as with her friend Jean Prouve. Although she was pushed into the background, she was the author of, for example, iconic furniture designs and great contributions in equipment that achieved improving the society of the time. In connection with exploring ways to expand the temporal perception of architecture through exhibitions, architectural installations, and articles, the architect and designer Cristina Parreño Alonso leads ‘Carbon to Rock’ project, which is the third study of the so-called Igneous Tectonics series where the company Cuellar Stone has collaborate with. It is already exhibited at the Biennale Architettura 2021.

The initiative revolves around the objective of mitigating global warmin as an ecological

consequence of CO₂’s emissions from human actions. According to the architect, who is also projects’ professor at School of Architecture and Planning, MIT, in USA, all the CO₂ on the planet ends up in rocks and, since the CO₂’ natural transformation process into rock takes million years, avant-garde technologies are being developed to radically shortening the time periods that convert carbon dioxide to basalt (volcanic rock). That is the case of CarbFix, which is one of these technologies that have achieved to calcify CO₂ in just two years. Therefore, through this volcanic rock, the study will investigate the industrial process to capture CO₂ from sources of emission or directly from the air and store it as a rock.

The project, which is installed in the famous exhibition space of the Arsenale, that is the Giardino delle Vergini, is conceived as a volcanic rock facility. It required co-participation of an agent capable of knowing well both the peculiarities of the stone as well as, the suitable mechanisms in terms of assembly. Cuellar Stone, which works with natural stone since

1958 and has always bet on development, innovation, design, and architecture, has been responsible for responding to this demand through the use of the appropriate anchoring systems, since this type of rock is extremely sensitive and split easily. Once this premise was solved, the company assembled the structure, which will be exhibited at the 17th International Architecture Exhibition of La Biennale di Venezia, -the most important one in Italy and one of the most relevant in the world-, until November 21, 2021.

The investigation has been carried out by a team formed by Sergio Araya and Cristina Parreño, in collaboration with students of architectural projects' courses. It will lead to a series of architectural reflections that will integrate the infrastructure and the spaces' creation with new advanced technologies of carbon retention.







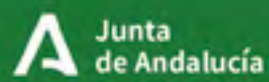
ESCUELA DEL MÁRMOL DE FINES

CENTRO DE REFERENCIA NACIONAL DE PIEDRA NATURAL

Un centro de innovación en el sector, queremos contar contigo.

Polígono Industrial Las Cruces, V-1. 04869 Fines (Almería).
Teléfono: 950034916. Correo-e: cm.piedranatural.sae@juntadeandalucia.es

[@Escuela_Marmol](#) [escueladelmarmoldefines](#) [Escuela del Mármol de Fines](#)



Consejería de Empleo,
Formación y Trabajo Autónomo

Servicio Andaluz de Empleo



COLOR EXPLOSION IN 'LOS HAMPTONS'

2021 CASA DECOR SPACE BY FRAN
CASSINELLO

Source: Mármoles Sol



SHOES & BAGS

Cuéntanos tu proyecto,
lo haremos posible.

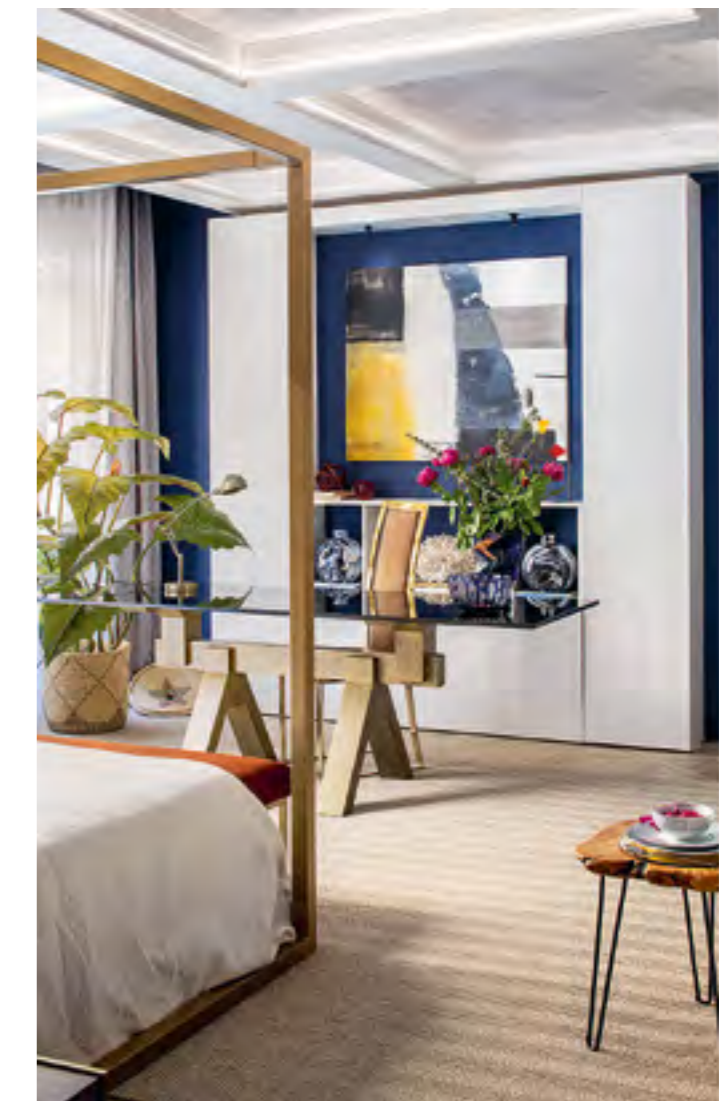


marmolessol.com





Color is pigment and visual illusion; it is matter and cognition. Knowing how to explore its possibilities and discovering its great expressive potential, which comes from its double nature of materiality and its effects on our psyche, is having the key to success in interior design. There are few elements like color capable of generating such a transfer of energy, to make us go through different states: from comfort to restlessness, from relaxation to stress, from tiredness to productivity or from happiness to sadness. The Hamptons' space is cool spirit, naturalness, warmth of home, and joviality achieved by the blend of saturated colors and sinuous elements. It is the Fran Cassinello's stamp, who this year, in collaboration with Mármoles Sol, installs natural stone in its 2021 Casa Decor's space again. The intention, through this environment, which is inspired by the sweet design of the American East Coast houses, it is moving away from ostentation and highlight the back to nature and rest. Therefore, the designer has opted for an aesthetic where blue and white stand out and are combined with ocher, gold, and earth tones, together with the use of organic materials. In addition to the stone, wood, glass, and natural fiber fabrics have been installed. The space is divided into three different environments, each with its own identity: kitchen in the entrance hall, bedroom area with living room, bathroom, and terrace.





As a kitchen countertop and cladding, the Mandalay Interiorismo team has included Salone with satin velvet finish, which a granite belonging to the Zenith Series of Mármoles Sol. This stone, with an off-white background and warm gray countless grooves, brings dynamism and enhances the luminosity of the piece, which has been chosen in elegant cold tones. Ocean Blue, in this case from the company's Infinity Series, stands as the main protagonist of the bathing area. It is installed as a superimposed panel which different points of artificial light emanate from. This singular quartzite was born to be the center of any decoration. It is, by its fine concentric veins in earth tones that wave a beige, ocher, and light blue background, the contrast point and the area's original touch, which follows the blue trend of the rest of the environment. The rest and lounge area is characterized by the inclusion of gold, earth tones, and materials that add warmth, like wood, velvet, and natural fibers.

The Hamptons is also sustainability. They have reused elements that had already been used in previous productions and they used pieces that already existed in the Mandalay store. In addition, through the use of existing facilities, which have even determined the space's distribution, the debris level has been reduced to the maximum. Once the show is over, the designer will give a second life to the elements in other exhibitions, both from suppliers and from the own design studio. Fran Cassinello repeats collaboration with Mármoles Sol, that is a company which is headquartered in Olula del Río, (Almería), and counts on logistics centers in the Spanish cities of Vúcar (Almería), Madrid, Granada, Murcia, and Málaga as distributor of natural stones from exclusive quarries of the world.



MUEBLES DE PIEDRA LIVIANOS Y SIN LÍMITES

- Peso 3 veces inferior y mayor resistencia
- Piel de piedra 100% natural "efecto macizo"
- Frentes y cajones de piedra
- Continuación de veta a cinco caras
- Se puede retroiluminar
- Fácil y rápida instalación



TINO MARBELLA
 Ctra. Nac 340, km 175 Rio Verde,
 Puerto Banús, 29660
 (+34) 952 906 149



www.tinostone.com
www.stonesizepanels.com
 @tinonaturalstone

MARBLE FURNITURE: SCULPTURAL ON THE OUTSIDE, ULTRA-LIGHT ON THE INSIDE. URVANSTYLE BY VIANNY SANGUILY

Source: Tino Natural Stone





In architecture, the only constant is change. The Urban Style team, which is a Miami-based architecture firm, works under this premise and, in collaboration with the company Tino Natural Stone, has created this furniture collection based on natural stone as the only pattern of its design. The whole family is made up of ten pieces that have different geometries and various types of marble but share a common denominator: the use of Stonesize, which is the ultralight stone system that is revolutionizing the traditional concept of natural stone work. This solution combines a thin layer of stone reinforced by a honeycomb core, fiberglass or other light and resistant materials. The technique, not only allows to combine big format and giving the stone extreme lightness, but also makes a piece fully machinable. In this way, both the penalty and the risk of breakage are eliminated, so it is possible to design any furniture in natural stone, which was very complex so far. The collection by the architect and designer, Vianny Sanguily, comprises of various models of stools and tables with minimalist trend and functional character. All the designs, which are characterized by simplicity, clean lines, and singular stone texture,

fit into any space: from avant-garde, practical, and balanced rooms, where monochrome reigns, to chic, classic, and modern environments, where quality of details prevails and the decoration represent a statement of intents.

On the one hand, Black Marquina and White Nebula marbles have been combined for the stools' line. They form a perfect contrast between material with black background and light white veins, and luminous white marble with purplish gray grooves. These pieces are divided into two types of shapes: square and hexagonal. On the other hand, the designer has chosen the material uniqueness creating three designs, in three different marbles: Arabescato Breccia, which is a material of fractured texture, off-white background, and lines of different gray shades, and once again, Black Marquina and White Nebula. These pieces have been made with the book-match composition, which is a technique that evolves the design of a natural stone slab towards a symmetrical pattern that allows creating a set where the veins have continuity between a piece and another. Thus, it is possible to achieve a mirror effect that stands





out, even more, the material's beauty and naturalness.

The Urban Style by Vianny Sanguily collection culminates with the design of three side tables made in White Nebula and characterized by thick edges. The optical illusion is contemplating 100% solid pieces, but the reality is that the lightweight Stonesize panels by Tino Natural Stone, who is a luxury projects specialist company, grant them extraordinary lightness. Edges and corners are adjusted to the millimeter to offer a robust aesthetic, of subtle elegance and simple, linear, and clean shapes.



ASYMMETRIC VOLUMES AND MATERIALS' CONJUGATION

FOR THIS HOUSE ADAPTED
TO SUNLIGHT

Source: Pimar Stone

This Mediterranean villa, which is located in the coast of Murcia (Spain), has been projected by the architecture studio Torres y Asociados. It uses an architectural language expressed in fragmented volumes, chromatic opposition, and successful mix of materials. Natural stone and compact surfaces, provided by Pimar Stone company, are some of the axes of a design that responds to the specific solar chart of the terrain and the criteria for hours of spaces' use. Height

contrasts have been set according to the wind rose directions, so that, inside, the natural air movement refreshes the environment in summer, while, outside, the entrance of the sun in winter, and the protective shades in summer, are enhanced.

The construction strategy of this demanding project includes limestone and the ultra-compact surface, Dekton, both indoors as well as outdoors. Specifically, more than 700 square meters of limestone have been

BLANCO MACAEL GRIS MACAEL GRIS ALBORÁN

JUAN TIJERAS
mármoles

www.juantijeras.com

Síguenos en:

Pol. Ind. Rubira Sola, Parcela C-1
04867 MACAEL (Almería-España)
Telf.: 950 445 440 / 669 362 141
info@juantijeras.es

used for the façade, which is merged with the use of Dekton, installed in large format. Thanks to the size and lightness of Dekton, the design possibilities, not only in façade, but also in kitchens, bathrooms, or high traffic floors, grow exponentially. Limestone is a sedimentary rock of a great variety of typologies and colors. It has a slight grain and is perfect for the design of façades that pursue modular structure and color uniformity. In this case, its base, which is halfway between off-white and light beige, fits properly with





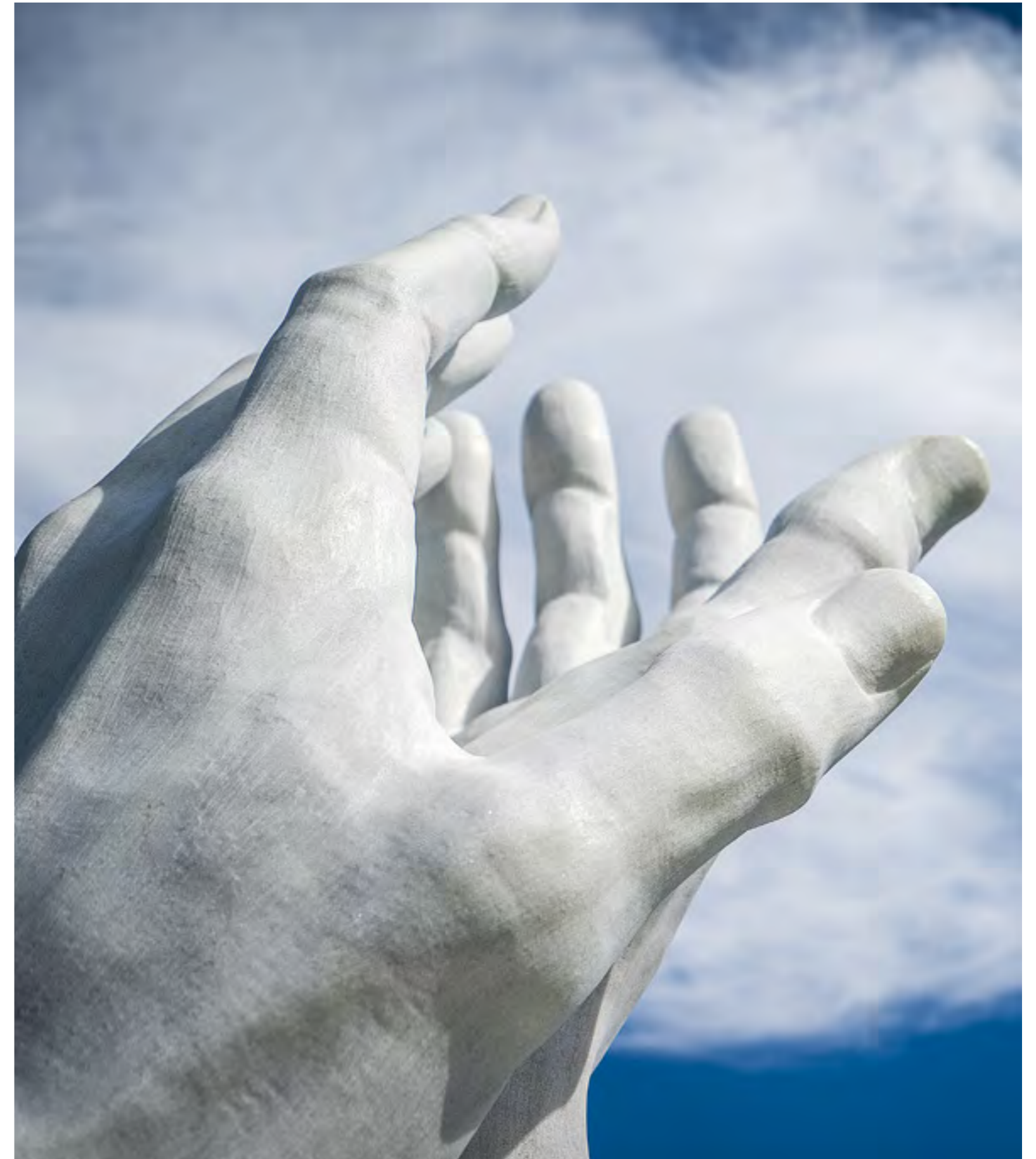
the saturated gray tone of Dekton which it is combined with. In the design of the kitchen, which is faithful to the trend of contrasts, it has been used again Dekton, both in the countertop and in the furniture. Pimar Stone, responsible for the entire supply of these materials, commercializes all types of natural stone and it also has a sales team, which is specialized in personalized advice.

The single-family house is composed of a basement for garage and cellar, ground floor with spaces for daily use, plus master suite, and first floor for exclusive use at night and study. It has, in addition to the adaptations in the form and distribution factors and use of appropriate materials, state-of-the-art air conditioning, heat recovery systems, and intrusion protection. Glazed windows to the garden with swimming pool complement this study where the precepts of habitability, comfort, and well-being have been applied.





Sculptures - tribute to professionals in the fight against the Covid-19 pandemic donated by the Andalusian Marble Industry Association. Made from the original model of the sculptor Navarro Arteaga.



**Redefining Surfaces.
Redefining Kitchens.**

DEKTON®
designed by COSENTINO



Los hogares evolucionan,
y las cocinas también.
se convierten en espacios sociales
en los que no solo se cocina,
se convive.

Hemos creado un material
resistente y duradero con diseños
y posibilidades ilimitadas,
para crear espacios
sin etiquetas.

THE COLLECTION COSENTINO Suelo/Encimera Dekton Chromica Baltic
Pared Dekton Liquid Embers

Infórmate de los 25 años de Garantía Dekton y
encuentra tu inspiración en www.cosentino.com

COSENTINO SEDE CENTRAL T: +34 950 444 175
e-mail: info@cosentino.com / Síguenos: [f](#) [t](#) [i](#) [in](#)

 **ESPAÑA**
Expo Dubái 2020