

# MÁRMOL

Architecture & Design

*No. 7. October 2021*

RENOVATED STONE  
ARCHITECTURE THAT  
PRESERVES THE SPACES'  
SOUL.





# EDITORIAL



Creative thinking leads to another way of doing things. From a unique natural stone mini golf to a bathroom or kitchen cabinet, from a façade in a historic building to a hotel spa, a restaurant or home table, a sculpture... We accompany you on the adventure of creating a project tailored to you. We offer different solutions to inspire, amuse, and inform you. We talk -through images- about the trends that are setting the style in the most contemporary constructions, in those of emblematic buildings; unique, surprising, and extraordinary works of architecture. We reveal the potential of the materials which the Macael Marble Brand crosses borders and

dresses real estate all over the world with. Natural stone, marble, and compact surfaces that are strongly imposed in modern design and architecture, adding value to the way of projecting and building. We know that know-how, together with the latest technologies to work with stone, are the key to excellence. If you are a professional, a lover of good design and you want to find the right pieces and/or materials for your project, this is your place. You will find in this October issue of 'Mármol / Architecture & Design' magazine all that gives us a more interesting and special reality.



[www.macaelmarmol.com](http://www.macaelmarmol.com)



Editor  
GLORIA CARRILLO SÁNCHEZ



# Summary

MÁRMOL / Architecture & Design

Editor  
Gloria Carrillo Sánchez

Edited by  
Asociación de Empresarios del Mármol de Andalucía AEMA  
(Andalusian Marble Industry Association)

Graphic design and editing  
Gráficas Lucmar, S.C.A.

Printing  
Gráficas Lucmar, S.C.A.

Legal Deposit: AL 2751-2019  
Printed in Spain

This magazine is printed on chlorine-free paper.

Magazine No 07.  
October 2021



**31**  
/QUARTZITE AND  
GRANITE,  
THE MOST RESISTANT  
BEAUTY IN NATURAL  
STONE



**14**  
/RENOVATED STONE  
ARCHITECTURE  
THAT PRESERVES  
THE SPACES' SOUL

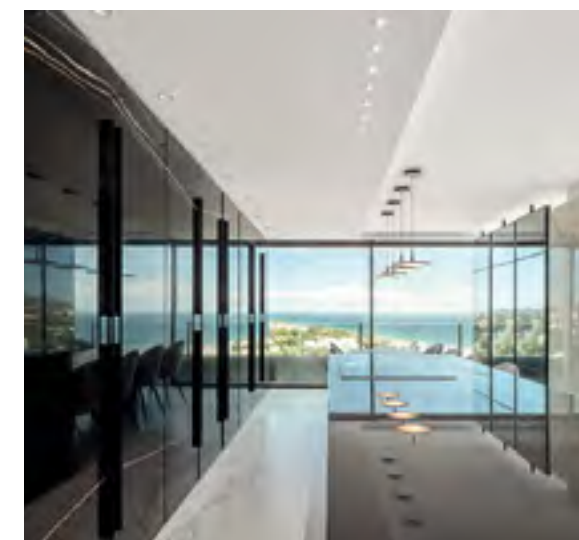


**45**  
/ CARVED STONE  
ON THE FAÇADE  
OF THE BANK OF  
SPAIN

**07**  
/STONESIZE  
BREAKS THE LIMITS OF  
CREATIVITY IN NATURAL  
STONE



**37**  
/WASHINGTON  
IRVING,  
GRANADA, SPAIN  
A STONE PROJECT IN A  
LITERARY STYLE



**23**  
/ NATURAL STONE  
FRONTIER OF AVANT-GARDE  
ART, DESIGN AND  
CRAFTSMANSHIP



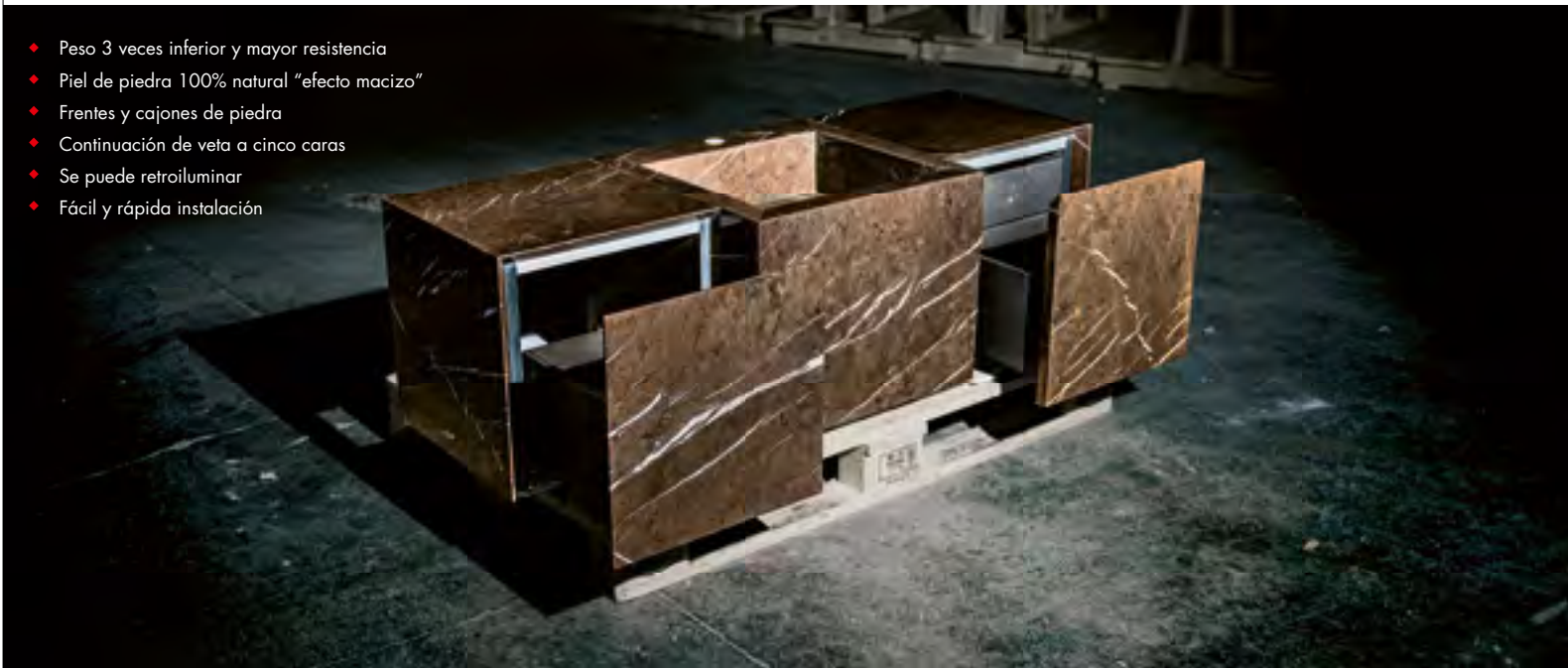
**53**  
THE SCHOOL OF  
MARBLE OF  
FINES,  
DRIVING FORCE OF  
THE NATURAL STONE  
KNOW-HOW





MUEBLES DE PIEDRA LIVIANOS Y SIN LÍMITES

- ◆ Peso 3 veces inferior y mayor resistencia
- ◆ Piel de piedra 100% natural "efecto macizo"
- ◆ Frentes y cajones de piedra
- ◆ Continuación de veta a cinco caras
- ◆ Se puede retroiluminar
- ◆ Fácil y rápida instalación



**TINO MARBELLA**  
Ctra. Nac 340, km 175 Rio Verde,  
Puerto Banús, 29660  
(+34) 952 906 149



[www.tinostone.com](http://www.tinostone.com)  
[www.stonesizepanels.com](http://www.stonesizepanels.com)  
[@tinonaturalstone](https://www.instagram.com/tinonaturalstone)

# STONESIZE

## BREAKS THE LIMITS OF CREATIVITY IN NATURAL STONE

Source: Tino Natural Stone



Si tienes ilusión por algo nuevo, nosotros también.  
[www.novastone.es](http://www.novastone.es)







Mediterraneanly 'chic'. That is how we could define the aesthetics of this magnificent home designed by Marcos Sainz, which nestles on the Costa del Sol, Málaga (Spain), and opens a spectacular view to the sea. The base shades and noble materials combined with vibrant accents and elegant contemporary touches, create this sophisticated and inspiring space. Every detail counts in it and each area is designed to complement the rest, as a whole. Among the keys of its design we can find, on the one hand, the use of Stonesize, the ultralight stone system from the company Tino Natural Stone, which is revolutionizing the traditional concept of natural stone work. This technique has made it possible to install large-format pieces thanks to the fact that it reduces the weight of the material to the maximum, and makes it highly resistant. In addition, it has been possible to create machinable elements in kitchen and bathroom furniture, which would have been unthinkable with dimensional stone of 2 centimeters thick. On the other hand, choosing a refined combination of natural materials in neutral and saturated colors is the warm counterpoint to the large floor-to-ceiling windows, that run through the entire apartment and maximize light and views for the whole day.





In the living room, kitchen and study area, the volume of the space has been used to the maximum by opting for an open-plan design. The kitchen has been entirely made of Black Mirage marble, which is a natural stone with a black base and geometric and scarce lines in white and amber colors. This space shows that the concept where the stone was relegated only to the fixed surfaces and countertop is already behind. Drawer fronts, cabinet doors and complete island, have been covered with Stonesize low thickness marble panels for large format. For the flooring, both interior and exterior, Nebula White marble has been chosen which, installed in a large format, visually reduces the number of joints and greatly increases the design possibilities. In this phase of the project, the pre-planning process at the factory, known as marble dry laying, becomes very important. Once the selection, measurement, cutting and finishing of each piece have been made, all the stone panels are laid out, as they should be arranged in the destination project. The necessary corrections are made, each panel is numbered and sent to its final place with the proper instructions so that they are correctly placed. The objective is to achieve a striking aesthetic result through the continuation of the drawing of the veins between the different stone sheets. The work experience and knowledge of the professionals at Tino Natural Stone, which is a natural stone distributor and specialist in luxury projects, has been fundamental.







Special mention should be made of the impressive pieces of White Onyx, conceived as visual and spatial filters, which provide privacy between the areas in the common areas and serve as headboards in the main room. With an almost sculptural character, they are displayed in night rooms like a canvas which to admire the plastic qualities of natural stone on, thanks to its backlighting. Stonesize offers a unique solution for creating large format backlit onyx elements, avoiding the thickness penalty and enhancing the extraordinary crystalline quality of the material.

The chiaroscuro trend has been carried throughout the house by installing, again, Nebula White and Black Mirage, as well as Gris Picasso marble, which is a greyish-white marble which abundant and splendid veins in tones, mainly gray, intersect in. All and each of the bathrooms include cladding, flooring, cabinets, and furniture made with ultralight Stonesize panels. The seemingly solid furniture is the sum of several assembled panels, whose aesthetic effect is that of an enveloping piece, but technically easy to transport, handle, and install.

On the terrace, which promises to be the setting for some of the best moments, a table for several diners with a Stonesize panel in Macauba Blue, a viewpoint for two, and a chill-out area, complete this project which dreaming big has been possible with.



**RENOVATED STONE  
ARCHITECTURE THAT  
PRESERVES THE  
SPACES' SOUL**

Source: Cosentino







Respect for the historical heritage, recovery and optimization of the spaces, together with an adequate accessibility, have been the purposes of this Redondo Soria Arquitectos rehabilitation project. It has been carried out in the Hanging Houses of Cuenca, Spain, which, together with its Gothic cathedral, contributed to the fact that, in 1996, the walled city was considered a World Heritage Site by UNESCO. The Hanging Houses, which are declared a Site of Cultural Interest and were built between the 13th and 15th centuries, house the Museum of Spanish Abstract Art, as well as the Hanging Houses restaurant. The work, which has been focused on the comprehensive reform of exterior and interior building's spaces, stands out by the inclusion of Cosentino Natural Stone, both for flooring and cladding, as well as furniture.

Specifically, for the culinary space, which has been designed in three aesthetically different areas, four types of natural stone have been used. In the first place, Black Zimbabwe granite, in its vintage finish, appears in the stairs that go from the mezzanine that receives users to the upper floor, where a dining room, known as the Black Room, is located. This compact stone, with medium-fine grain and stately aesthetic, is especially recommended for adding sophisticated appeal to public spaces. In this case, it has also been installed for the flooring of this restaurant's area.

However, most of the reform has been projected on the complex second floor. The room, which belonged to a house used as a warehouse in very poor condition, has become a space that emulates the so-called White Room of the museum in textures, luminosity, geometry and color. White Thassos marble in a polished finish has been used in this area. The secondary entrance, the bathroom, the staircase that joins them, as well as another of the dining rooms, called Sala Pétrea, is a singular fragment of nature turned into a piece of design. In this case, Pacific Gray granite in an aged finish has been used. Flooring, staircase, wall covering and central table stand as a true contemporary reinterpretation of natural stone. Its atypical aesthetic, with a gray background with fine white grooves and cavities in chiaroscuro tones, make this stone a surface that, in addition to being an example of durability, is a top design for luxury hospitality.





To round off this project, the Soria Arquitectos team resorted to a 'must' of exclusivity: Onyx Miel, a semi-precious material with organic and sumptuous shapes, which unique and unrepeatable pieces are obtained from. With it, the elaboration of a high table that presides over the area for wine tasting has been carried out. This piece, configured in straight lines and polished finish, has been backlit on the inside to add even more uniqueness to its design. This resource enhances the brightness of the material's veins and highlights the space ornamentation, since it reveals the tens of

thousands of small crystals quartz that make up onyx and produce its enormous variety of colors, textures, and patterns.

The choice of natural stone by Cosentino for the spaces of this demanding project does not disappoint and goes with the idea of preserving the natural essence of the iconic construction. The multinational Cosentino, based in Almería, is a leading family business in the distribution of surfaces for the world of architecture and design.











**NATURAL STONE,  
ART, DESIGN AND CUTTING EDGE  
CRAFTSMANSHIP**

TODOMUTA, CESAR GIRALDO, JINSIK KIM & VERÓNICA MAR

Source: Cuellar Stone



WWW.CUELLARSTONE.COM

SIGUENOS EN    





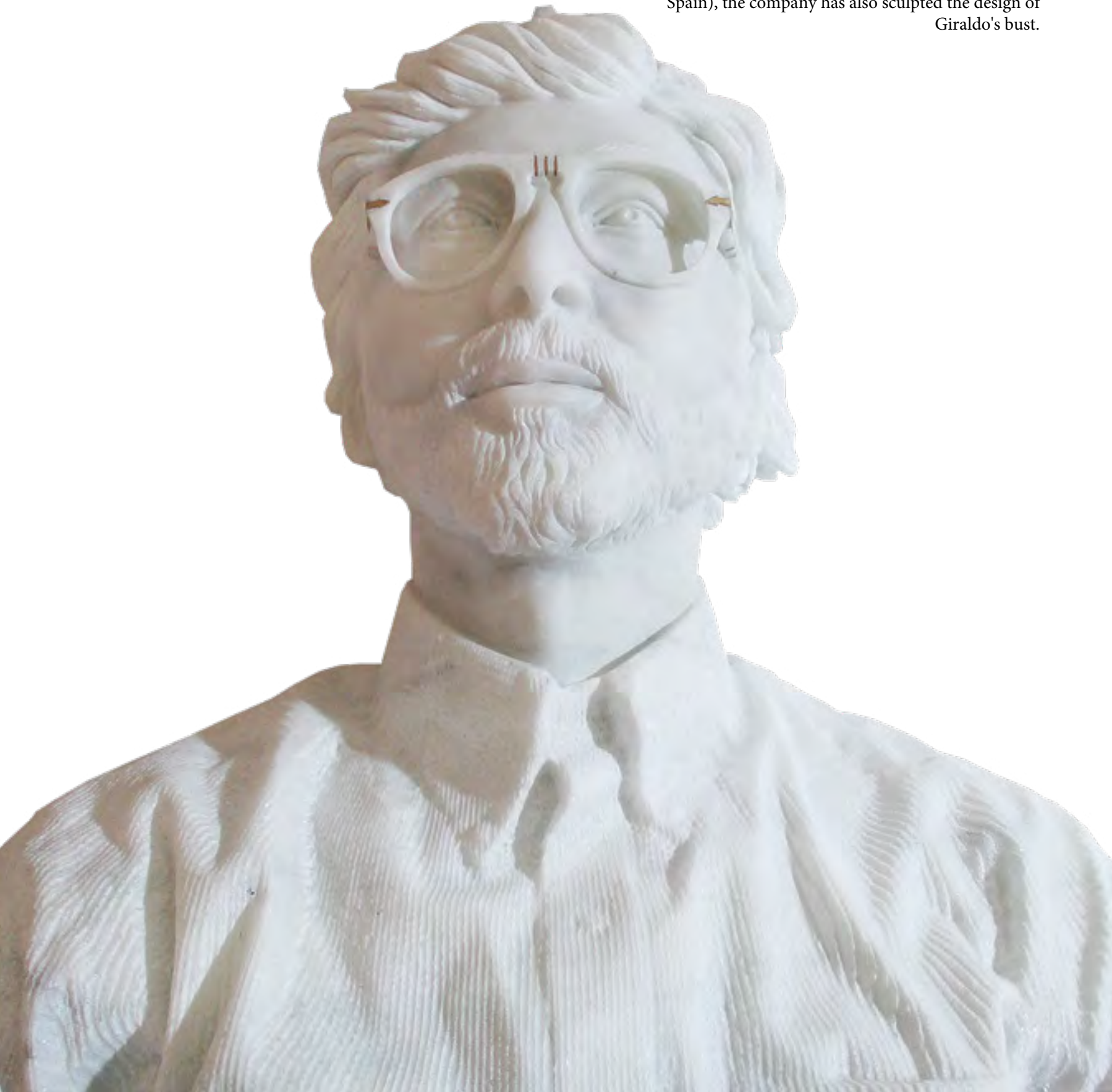
It is the symbol of enduring beauty, an icon of sophistication and a sea of possibilities in design. Marble and natural stone are the claim of innumerable exhibitions of art, architecture, design, and decoration and they are -more and more everyday-, fetish materials of professionals from all over the world. This pieces' selection proves it. They belong to a program launched by the company Cuellar Stone, which is focused on the collaboration with Spanish and international renowned design firms, such as Todomuta, Cesar Giraldo, JinSik Kim, and Verónica Mar, whose goal is the creation of unique pieces in natural stone. The company from Almería, Spain, which has been working with natural stone since 1958, confirms with this initiative its commitment to development, innovation, design, and art as a new added value for this noble material.

Firstly, these pieces, with a sculptural soul, faithful to originality, organic forms, and an emphasis on the mix of materials, -which characterizes Todomuta studio's designs-, have been created in Negro Marquina and Blanco Macael marbles, combined with aluminum and stainless steel. Each of them, which share the same design, but are made of different material, is made up of three modules of natural stone abstract shapes that fit together, while resting on a stainless steel base. They are finished with a piece of aluminum embedded in the marble, as a way of embellishment. The collection has been exhibited at the Art Basel Miami (Florida), the Gallery ALL (Los Angeles, California), and the City Center that the Spanish multinational Cosentino has in Miami's Design District.





On the other hand, Cesar Giraldo has conceived Side Tables, two auxiliary tables recalling miniature stone blocks, which are characterized by the uniqueness of the material in each one. They have been made in Negro Marquina and Blanco Carrara, two marbles that represent elegance and timelessness par excellence. This interior design collaboration line between the prestigious designer and Cuellar Stone has been exhibited at the La Ciénaga Design Quarter International Fair (LCDQ), held in the 'design district' of Hollywood, Los Angeles (California). With him, Door Handles have also been elaborated, designed in a single piece of Blanco Macael marble. With this material, born in the quarries of Macael (Ameria, Spain), the company has also sculpted the design of Giraldo's bust.







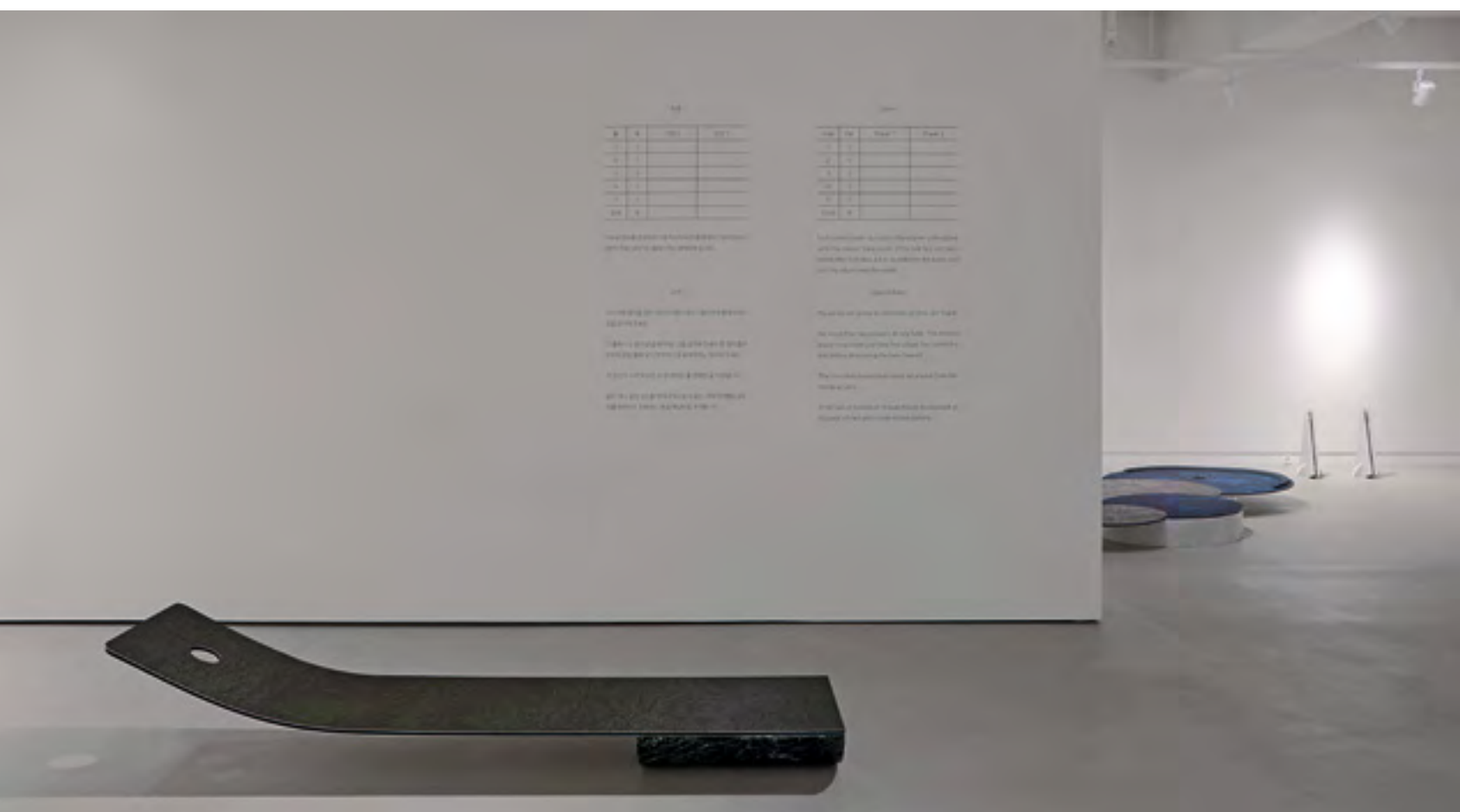
Fotografía: Neulhae Cho

In Verónica Mar's designs we can observe a perfect curve in continuous movement carved in marble by skilled craftsmen. These are SOUL and ULA Sculpture, two sculptural benches destined for a private home in New York and which can be purchased through the Ateliers Courbet gallery. ULA means jewel of the sea, while SOUL is the materialization of the spirit and the spiritualization of matter. They have been designed as a totem pole and both are made of Verde Macael marble, a natural stone from the town that gives it its name, with an intense green background and marked, irregular, undulating white veins.



Fotografía: Sangül

The Korean JinSik Kim has opted for natural stone in different colors for the base of his iconic mini golf design. The creation was presented by Wallpaper magazine in a new edition of Handmade at the Leclletico Gallery in Milan and exhibited at the International Furniture Fair. For its construction, the designer has used a very diverse combination of materials: Carrara White marble, Negro Marquina, Rojo Alicante and Sierra Elvira, as well as Bolón textile material for the surface. Cuellar Stone, in addition to the elaboration of the pieces based on the specifications of the project, was also in charge of their installation at the event in Milan. This collaboration between both also includes the design of their well-known Playful wave; supports and trays for ping pong paddles perfectly carved in different materials: Gris and Blanco Macael, and Green Onyx marble.





**MÁRMOLES SOL**  
PIEDRA 100% NATURAL

**SHOES & BAGS**

Cuéntanos tu proyecto,  
lo haremos posible.

Download on the  
App Store

GET IT ON  
Google play

marmolessol.com



BLANCO MACAEL    GRIS MACAEL    GRIS ALBORÁN

**JUAN TIJERAS**  
mármol

www.juantijeras.com

Síguenos en:

f t in

Pol. Ind. Rubira Sola, Parcela C-1  
04867 MACAEL (Almería-España)  
Telf.: 950 445 440 / 669 362 141  
info@juantijeras.es

# QUARTZITE & GRANITE

## THE TOUGHEST BEAUTY IN NATURAL STONE

Source: Mármol Sol

Its variety of colors and veins make these natural stones the star of any space. They are a 'must' in flooring, cladding and countertops of sophisticated designs, but fit with any trend. Its appeal is not only aesthetic; there are many technical qualities that make quartzite and granite the favorite materials of architects and, above all, interior designers. In addition, its enormous chromatic diversity means that there is a variety of material suitable for each space, each style and each essence.





Material: Salinity

and contrast, this quartzite mixes black, earth, copper and even white tones. It is pure authenticity and defiance. Salinity, another quartzite that, like Boulder, belongs to the company's Infinity Series, is closer to brown and beige tones. It has an intense concentric veining and stands out for its great naturalness. The material tables, unfolded into a book -bookmatch-, get the maximum level of aesthetic advantage that this natural stone can give. Ocean Blue, with its fine veining in earth tones that undulate a beige, ocher and light blue background, is the cool point in a warm atmosphere.

Quartzite has the beauty of marble and the strength of granite. It is a metamorphic rock composed essentially of quartz, which has a high index of resistance to abrasion, stains and chemical agents. It is very suitable for floors, coverings and is especially suitable for countertops, due to its low porosity index. Looking forward to autumn, thinking of warmth and comfort, comes the collection of Mármoles Sol, which is a distributor of natural stones from exclusive quarries in the world, Boulder, considered its most revolutionary color. Full of personality, asymmetry



Material: Ocean Blue



Granite, on the other hand, is a natural stone with a more uniform and flat texture and that has a high resistance to compression, as well as low water absorption. It has a high durability, little comparable to other natural materials and is very easy to maintain and, both for architecture and construction, it is probably the most used stone. Within the granites of Mármol Sol, Premium Black Plus, belonging to the Cénit Series, is one of the best examples, not only of resistance, but also of elegance. Its intense black background is interrupted by a very light diamond-shine texture that, in its mirror finish, is timeless and the sober note of a very defined style.



Material: Premium Black Plus



Material: Boulder

These materials, whose characteristic is also sustainability, are now available at all Spanish Mármol Sol logistics centers (Madrid, Granada, Almería -Vicar and Olula del Río-, and Murcia). They are installed with measures of approximately 3x2 meters, which favors the reduction of joints and greater homogeneity of the space. In addition, the mirror finish, a high-gloss finish, represents an added value.





# WASHINGTON IRVING, GRANADA

A PROJECT IN STONE WITH A  
LITERARY KEY

Source: Mármoles Gutiérrez Mena







Located next to the Alhambra, which is one of the corners with the most history in Granada, the Washington Irving hotel project is a dialogue between design, history, and literature under the same common thread: natural stone as the main material in floors, walls and facade. In this case, the multinational chain Hotusa relied on the Mármoles Gutiérrez Mena firm from Almería to elaborate some of the stone areas within its rehabilitation and expansion plan, after seventeen years closed to the public. Some time ago, it was one of the most luxurious hotels in the capital. In fact, it became the only one with hot and cold running water in every room. The building was built in an area known as 'Las Ventillas' in 1802, but it experienced its heyday between the 1960s and 1970s, thanks to its privileged location just twenty meters from the walls of the Nasrid complex.





Rooms, swimming pool, gym, spa and sauna, rooms for celebrations, restaurant, outdoor terrace, lounge-library, and in general, all the decoration of the spaces of this five-star accommodation winks at the work 'Tales of the Alhambra' by the Romanticist writer who gives it its name. In the corridors, for example, there are some of the quotes where Washington Irving made reference to Granada and, in his library, the first editions of the book are on display. The idea of its design was to maintain that cultural orientation that links the establishment to the city which it stands in, and thus transmitting part of its soul to the customer. For this, among other natural stones, Sierra Elvira marble has been installed in a large part of the complex. First of all, its sober and elegant façade stands out, blending in with the surroundings through the use of this variety of limestone with a grayish surface with minimal grooves in beige and earth tones. With this stone the main entrance area has been completed, as well as the framing of all the exterior windows.







On the inside, this marble-looking stone has been used for the terrace flooring, as well as for the spa area, where the walls have also been covered. Sierra Elvira marble is characterized by its great compactness and its low level of porosity. It is one of the star materials of the Gutiérrez Mena company, which also has its own White Macael marble quarries and focuses its activity on the entire production process, from extraction to transformation and distribution. It is frequently used in projects that seek integration with nature, tranquility and warmth but that, at the same time, look for the added value that few materials such as stone are capable of giving.



PROYECTOS EN MÁRMOL

CAMAR



RÉPLICA ALHAMBRA DE GRANADA - ARABIA SAUDITA



BANCO DE ESPAÑA - MADRID



## CARVED STONE ON THE BANK OF SPAIN FACADE

Source: Mármoles Camar



VIVIENDA PRIVADA - MARBELLA



CENTRO CANALEJAS - MADRID

ANASOL

WWW.CAMAR.ES +34 950128123 CARRETERA DE TAHAL S/N 04867 MAÇAEL-ALMERÍA-ESPAÑA





More than a hundred years after its construction, the central headquarters of the Bank of Spain fulfilled, in 2006, its desire to go from being a small palace to completing an entire block. Currently, it is one of the most representative buildings in Madrid and, throughout its history, three extensions have been carried out on it. Rafael Moneo was in charge of the plans for the latest one. He is a renowned architect, the first Spaniard to receive the Pritzker in 1996, professor at universities such as Princeton or Harvard –where he was dean of their architecture department–, and responsible for the construction of buildings from Beirut to Los Angeles, passing through Madrid. The project, which started from the study of the evolution of the building, analyzing the composition mechanisms used by previous architects, includes 1000 cubic meters of carved natural stone on its façade. For this, the property relied on the work of the company Mármoles Camar, wich is a specialist in the execution of special and custom projects in stone since 1977.







In order to promote a dialogue between the elements of the 19th century and the naturalism of our days, pieces of contemporary sculpture were included in the façade and the use of the same materials of the primitive building was maintained, as well as some construction systems used at that moment. The stone used, which has been placed in the most powerful sections, has the peculiarity that it was removed raw and in solid blocks from its original quarries, to the facilities that the company owns in Macael (Almería). For the ground floor, 350 cubic meters of gray granite from Alpedrete were extracted. For the first floor and main floor, 650 cubic meters of White Alconera marble were used, which is an area that also included the use of 75 cubic meters of Michelangelo Statuary for the singular elements. The keystones of the arches are made of sandstone.





This singular project in stone, based on the transformation of the material, as well as on the important work of expert craftsmen, implies, given the magnitude and responsibility of the work, a great knowledge of stone work. There was also a vital phase during the execution: the company, after cutting and carving the pieces, carefully selected each one of them in the factory to present and place them, just as they would go at their destination.





Simposio Internacional de Escultura

Red de Centros de Referencia Nacional en el ámbito de la FP

# ESCUELA DEL MÁRMOL DE FINES

CENTRO DE REFERENCIA NACIONAL DE PIEDRA NATURAL

*Un centro de innovación en el sector, queremos contar contigo.*

Polígono Industrial Las Cruces, V-1. 04869 Fines (Almería).  
Teléfono: 950034916. Correo-e: cm.piedranatural.sae@juntadeandalucia.es

@Escuela\_Marmol    escueladelmarmoldefines    Escuela del Mármol de Fines

Junta de Andalucía | Consejería de Empleo, Formación y Trabajo Autónomo | Servicio Andaluz de Empleo

GOBIERNO DE ESPAÑA | MINISTERIO DE EDUCACIÓN Y FORMACIÓN PROFESIONAL | MINISTERIO DE TRABAJO Y SEGURIDAD SOCIAL | SEPE

## ESCUELA DEL MÁRMOL DE FINES, IS A PROMOTER OF NATURAL STONE KNOWLEDGE

“Education is the most powerful weapon you can use to change the world”. We don’t say it but Nelson Mandela (1918-2013), the South African activist and politician who led the movements against apartheid and that, after a long struggle and 27 years in prison, in 1994 he presided over the first government that put an end to the racist regime. This statement, which perfectly reflects the importance of the acquisition of knowledge, means in the existence organizations such as La Escuela del Mármol de Fines, within the world of the Spanish natural stone industry. It is an attached center to the Andalusian Employment Service, which is essential tool for training and a boost for artistic and sculptural work in natural stone.





Simposio Internacional de Escultura



Simposio Internacional de Escultura

The School has worked on initiatives that position Macael marble beyond its conception as an architectural material, to turn it into an artistic component. On the one hand, these initiatives are the International Sculpture Symposium, where a total of 115 established artists from 31 countries have contributed with their works to beautify squares and walks throughout the province of Almería, as well as the University campus of Almería, which was the contest last edition base. During nine editions, the artists faced to capture in stone, from a single block, themes such as 'Gender equality and against sexist violence' or 'The cultural past of the Spanish southeast: from Prehistory to the present day'. The objective was to convert public

spaces into open-air museums while highlighting artistic, technical, and business aspects related to natural stone in general, and Blanco Macael marble in particular.

The Youth Sculpture Contest, for its part, was another complementary initiative to the training, which brought together 220 young sculptors, Fine Arts students and students of arts and crafts from schools around the world, who worked around marble. This international sculpture competition had the purpose of offering a formula to communicate the ins and outs of the craft of carving and sculpture and also provided the opportunity to show a representative sample of young talents within the artisan sector.





Simposio Internacional de Escultura



Escultura "Aplauso infinito" en Jaén

Constantly, this natural stone training center, makes important contributions and collaborations with companies, public administrations, and educational centers, among others. In this regard, its work carried out with the Andalusian Marble Industry Association stands out. The school processed one of the eight sculptures-tribute to health workers and professionals who have fought against the Covid-19 pandemic. The figures, made from the original model of the sculptor Navarro Arteaga, are already located in seven of the eight Andalusian capitals. Seville will be the eighth and last city to open soon. It is also important its active participation during the process of international recognition of the Macael Marble Quarry as a unique cultural manifestation through its inclusion in

UNESCO's Representative List of the Intangible Cultural Heritage of Humanity, where it supports the Macael Council.

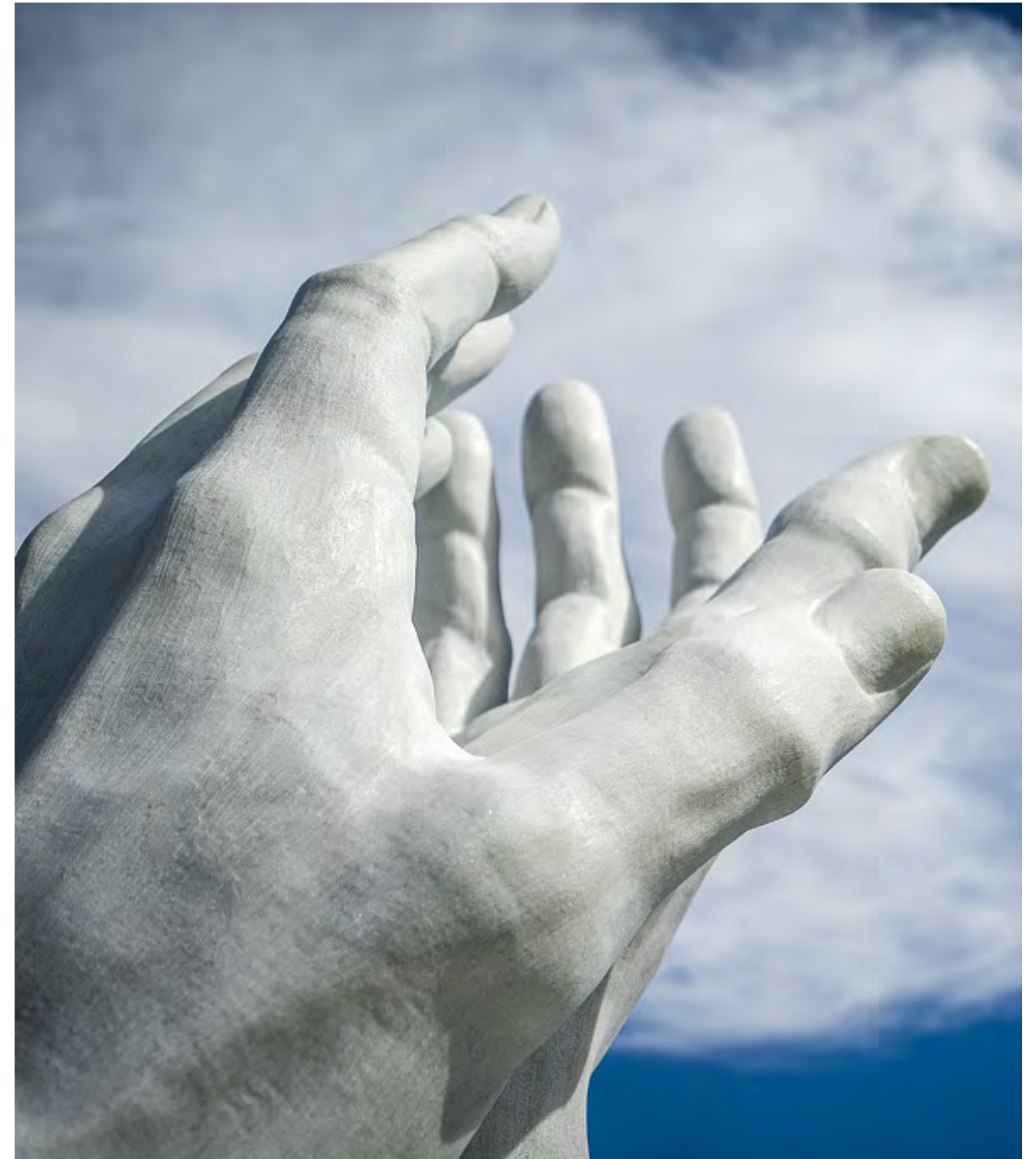
As a National Reference Center in Vocational Training for Employment in the professional family of Extractive Industries in the Natural Stone area since 2019, the Escuela del Mármol de Fines has among its objectives to detect the demanded training needs by the companies. The stone industry continues to evolve towards new production models, which cause changes in the labor market and imply transformations in jobs, both in the qualification requirement of the people employed, and in the demand for new knowledge according to the new market demands.



4VWfZWVMeSla' f' gageSVhS' UW  
fWZ' a'ayW' \_ S'W'S'd bcaU'W' bcaVglf'd S' V  
e'W'U' fZSf' d'W'g'd'W'a' e'S' f'f'd' [' Y'S' V'gbV'Sf' Y  
X'dfZ'W'abf' \_ S'i ad' b'W'ad' S' U'Z'5gd'W'f'k' \_ aef  
U'\_ bS' [W' f'ZV' S'U'W' \_ Sd'f'W'W'ad' TafZ' f'Z'W'  
fWZ' [U'S' W'W'Sc' \_ W'fe'S' V' bcaVgl'f'a' i' \_ S' V'ge'V'a'X  
U'\_ b'g'f'W' bcaY'e' \_ e'X'dfZ'W'W'Y' a'X'Z'W' bcaVgl'f'e  
S' V'f'Z'W' d'eg'W'f' \_ SUZ' [' Y'f'Z'g'Y'Z' \_ SUZ' W'  
i' f'Z'5@5 fWZ' a'ayW'Z'U'\_ b'g'f'W' W' \_ g' \_ W'U'S'^

U'\_ f'd'f'Z'W'W'W' W' bca'W'W'W' W' Y'f'Z'W  
` W'fa' [' U'W'W'g'bV'Sf' Y] ` ai' W'W'W'U'ad' Y'fa' f'Z'W  
` W' W'W'W'W' W'W'k'U'\_ bS' [W'Z'Fa' \_ W'Z'W'W  
W'W'W' W' f'Z'W'W'g'W'W'W' ad' a'W'W' W'Z'Se'W'W  
W'W'Y' [' Y' W' W'W'W' W'W'f'f'd' [' Y' bcaY'e' \_ e'f'Z'f'  
d'W'a' V'fa' f'Z'W'W'W' S' Ve'a'X'Z'W'f'a' W' V'ge'f'd'k'S' ai' [' Y  
f'Z'W' fa' Z'S'h'W'W'W'W' W'W'V'cg'S' W'W'W'W'Z'Sf'  
U'\_ f'd'f'g'f'W'a' [' U'W'W' Y'f'Z'W'a' \_ b'W'f'f'h'W'W'e'a'X  
U'\_ bS' [W'Z'

Sculptures - tribute to professionals in the fight against the Covid-19 pandemic donated by the Andalusian Marble Industry Association. Made from the original model of the sculptor Navarro Arteaga.



Ceramen Juvenil de Escultura



**Redefining Surfaces.  
Redefining Kitchens.**

**DEKTON®**  
designed by COSENTINO



Los hogares evolucionan,  
y las cocinas también.  
se convierten en espacios sociales  
en los que no solo se cocina,  
se convive.

Hemos creado un material  
resistente y duradero con diseños  
y posibilidades ilimitadas,  
para crear espacios  
sin etiquetas.

THE COLLECTION COSENTINO Suelo/Encimera Dekton Chromica Baltic  
Pared Dekton Liquid Embers

Infórmate de los 25 años de Garantía Dekton y  
encuentra tu inspiración en [www.cosentino.com](http://www.cosentino.com)

COSENTINO SEDE CENTRAL T: +34 950 444 175  
e-mail: [info@cosentino.com](mailto:info@cosentino.com) / Síguenos: [f](#) [t](#) [i](#) [in](#)

 **ESPAÑA**  
Expo Dubái 2020